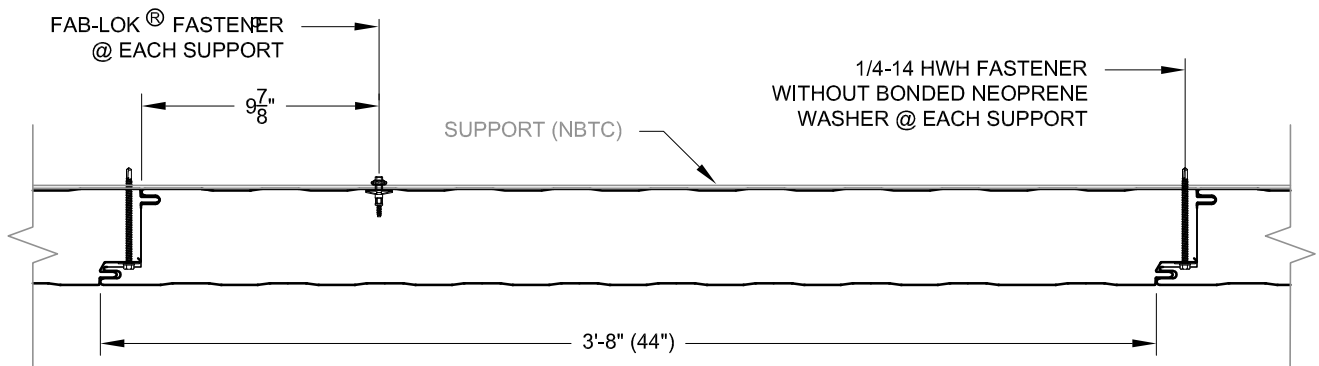
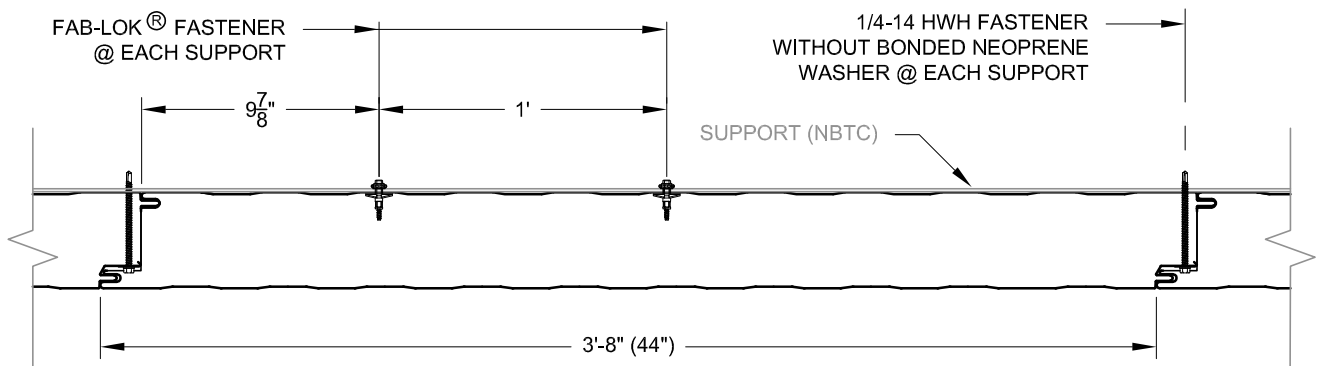


**TRUECORE 44" PANEL
ATTACHMENT METHOD 1
(SIDE JOINT FASTENING ONLY)**



**TRUECORE 44" PANEL
ATTACHMENT METHOD 2
(SIDE JOINT FASTENING W / (1) INTERNAL FASTENER)**



**TRUECORE 44" PANEL
ATTACHMENT METHOD 3
(SIDE JOINT FASTENING W / (2) INTERNAL FASTENERS)**

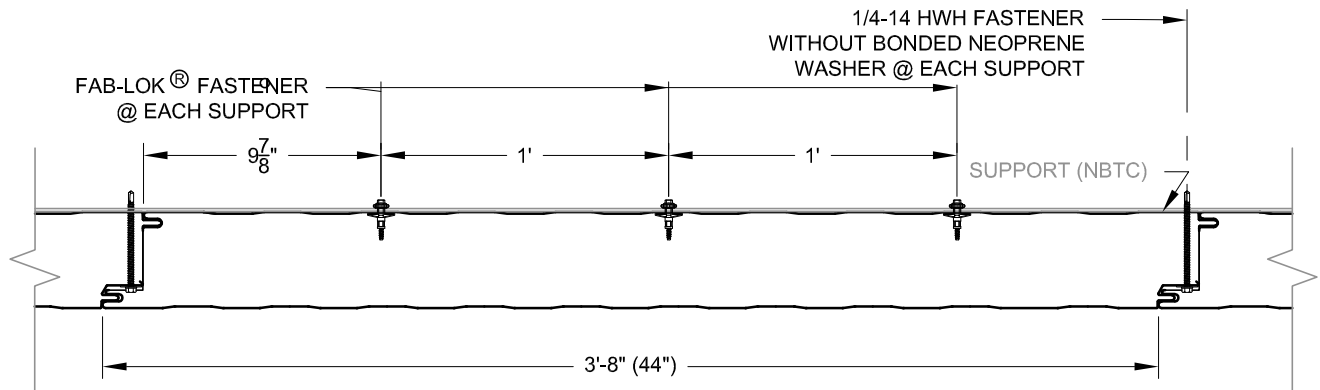


ATTACHMENT METHODS 1, 2, & 3

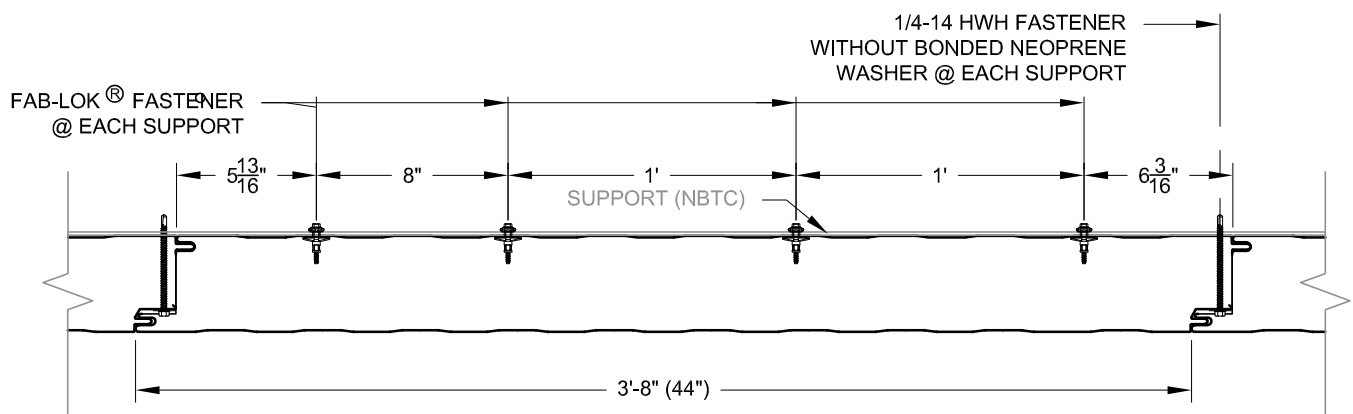
DRAWN BY:
DBN

DATE:
9-23-2019

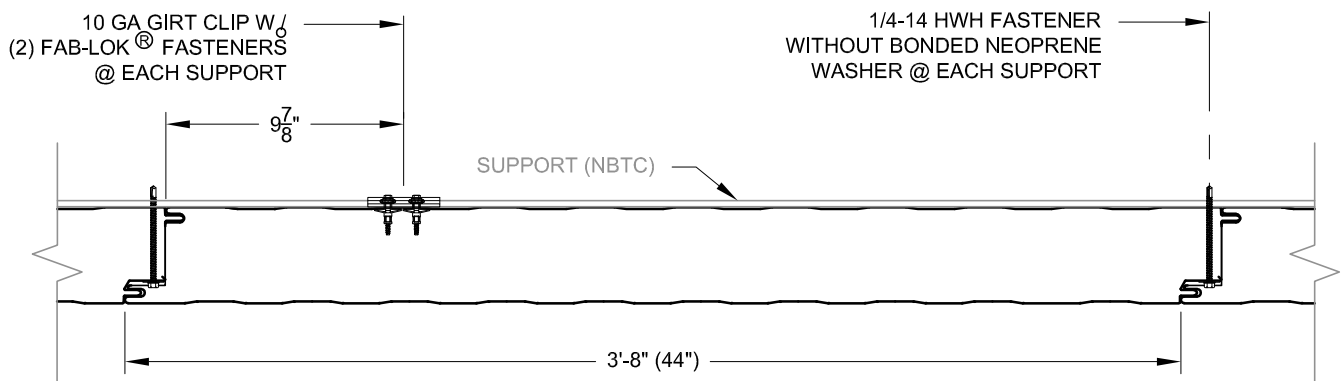
DRAWING NO.:
FST1



**TRUECORE 44" PANEL
ATTACHMENT METHOD 4
(SIDE JOINT FASTENING W / (3) INTERNAL FASTENERS)**



**TRUECORE 44" PANEL
ATTACHMENT METHOD 5
(SIDE JOINT FASTENING W / (4) INTERNAL FASTENERS)**



**TRUECORE 44" PANEL
ATTACHMENT METHOD 6
(SIDE JOINT FASTENING W / (1) GIRT CLIP)**

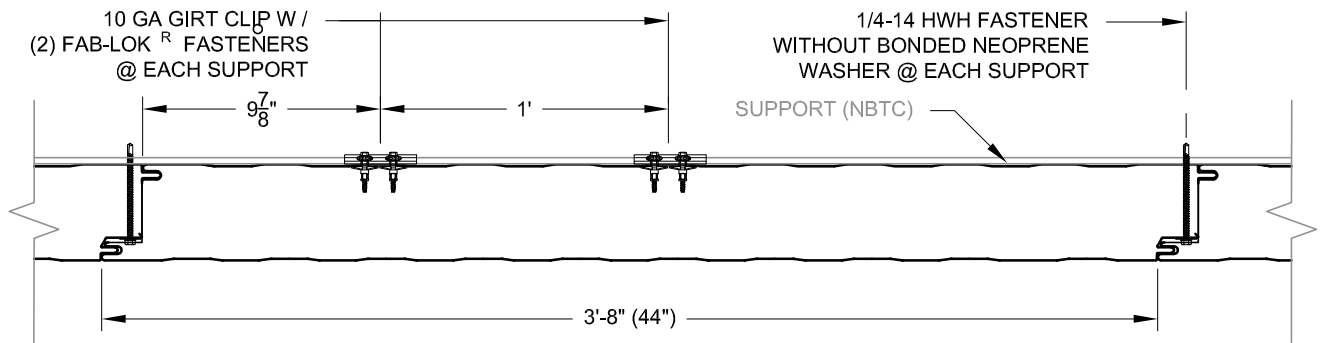


ATTACHMENT METHODS 4, 5, & 6

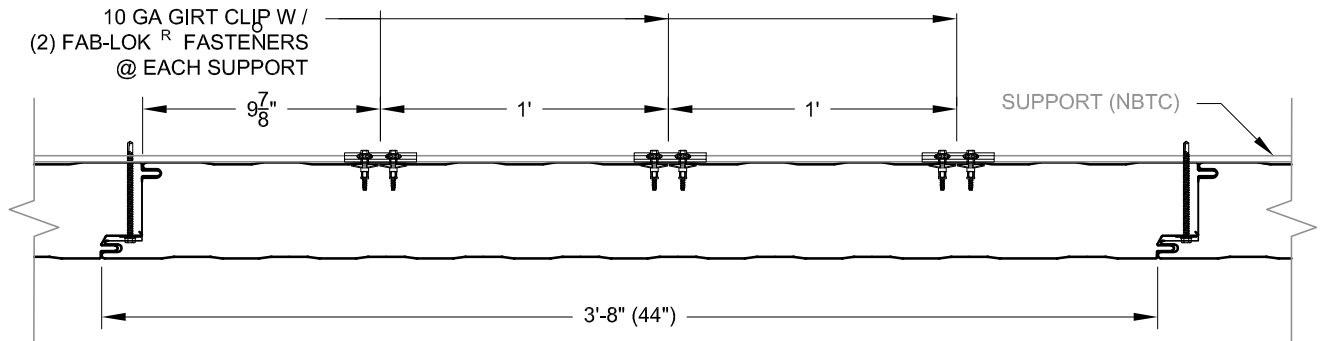
DRAWN BY:
DBN

DATE:
9-23-2019

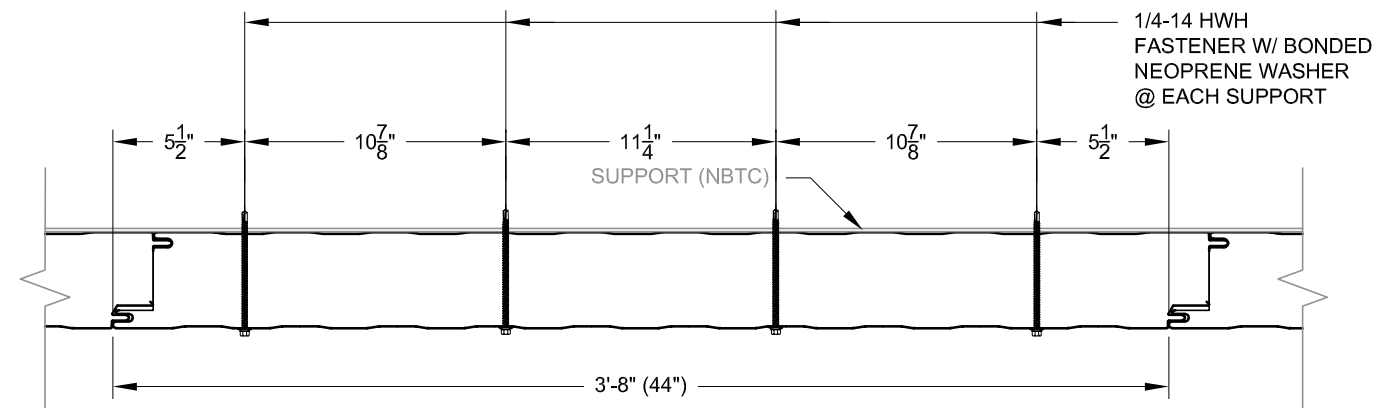
DRAWING NO.:
FST2



**TRUECORE 44" PANEL
ATTACHMENT METHOD 7
(SIDE JOINT FASTENING W / (2) GIRT CLIPS)**



**TRUECORE 44" PANEL
ATTACHMENT METHOD 8
(SIDE JOINT FASTENING W / (3) GIRT CLIPS)**



**TRUECORE 44" PANEL
ATTACHMENT METHOD 9
(EXPOSED FASTENING)**

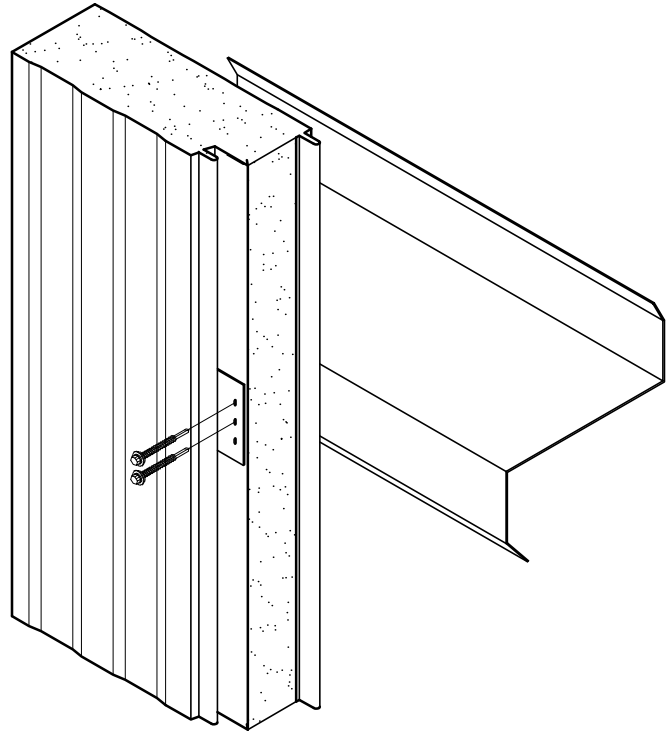
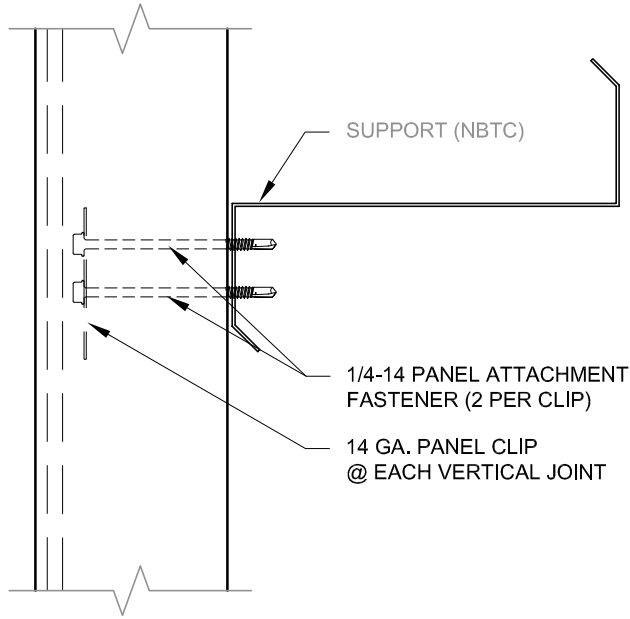


ATTACHMENT METHODS 7, 8, & 9

DRAWN BY:
DBN

DATE:
9-23-2019

DRAWING NO.:
FST3



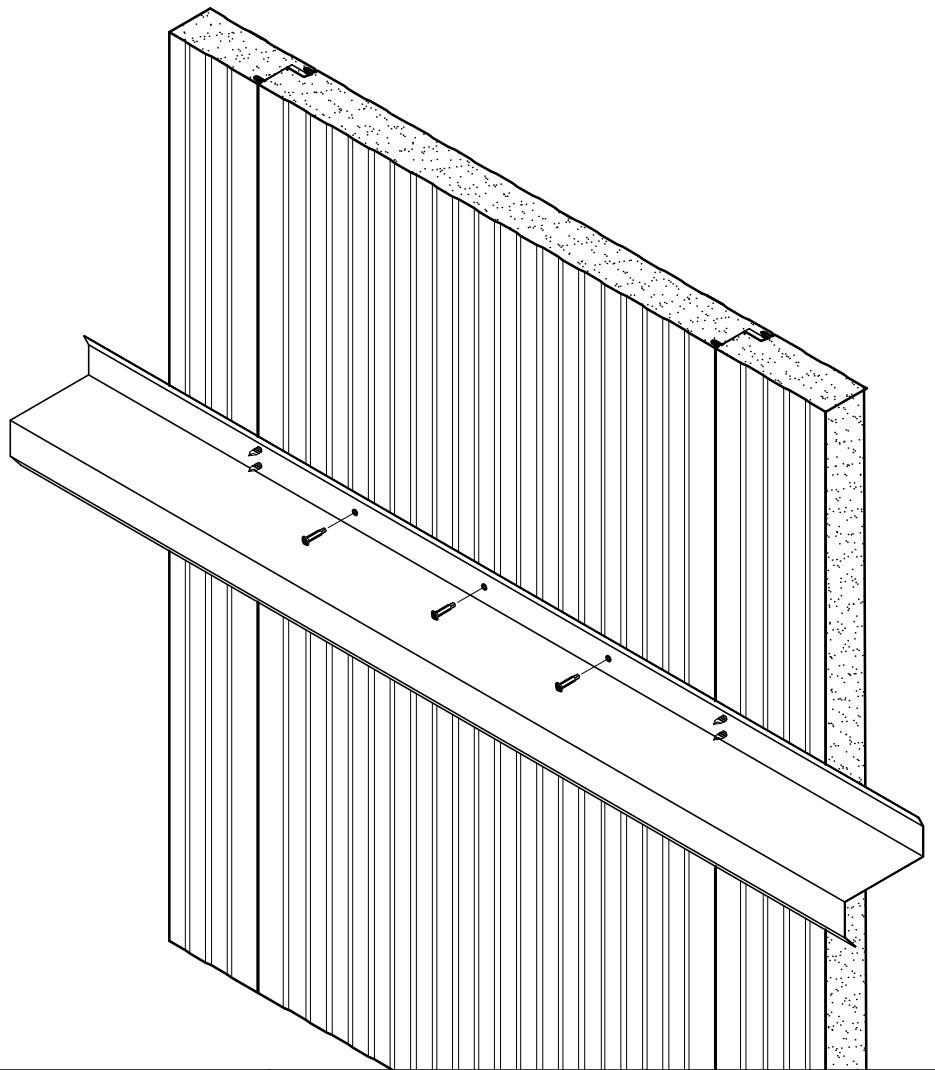
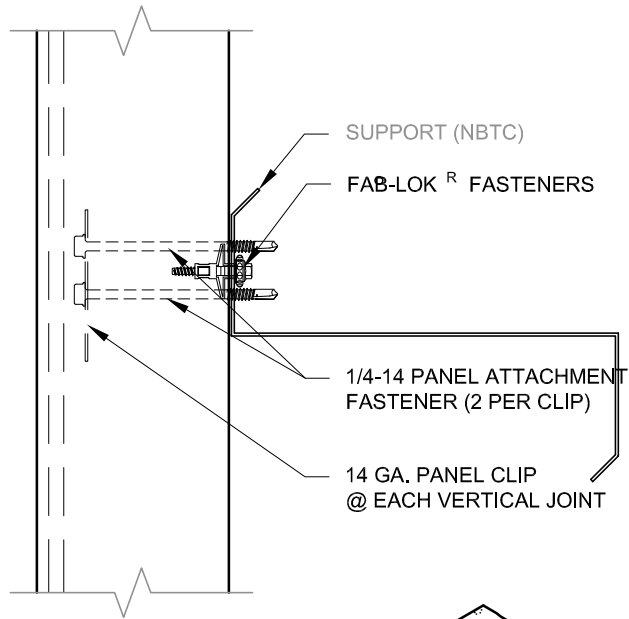
SIDE JOINT FASTENING
ISOMETRIC

DRAWN BY:
DBN

DATE:
9-23-2019

DRAWING NO.:

FST4

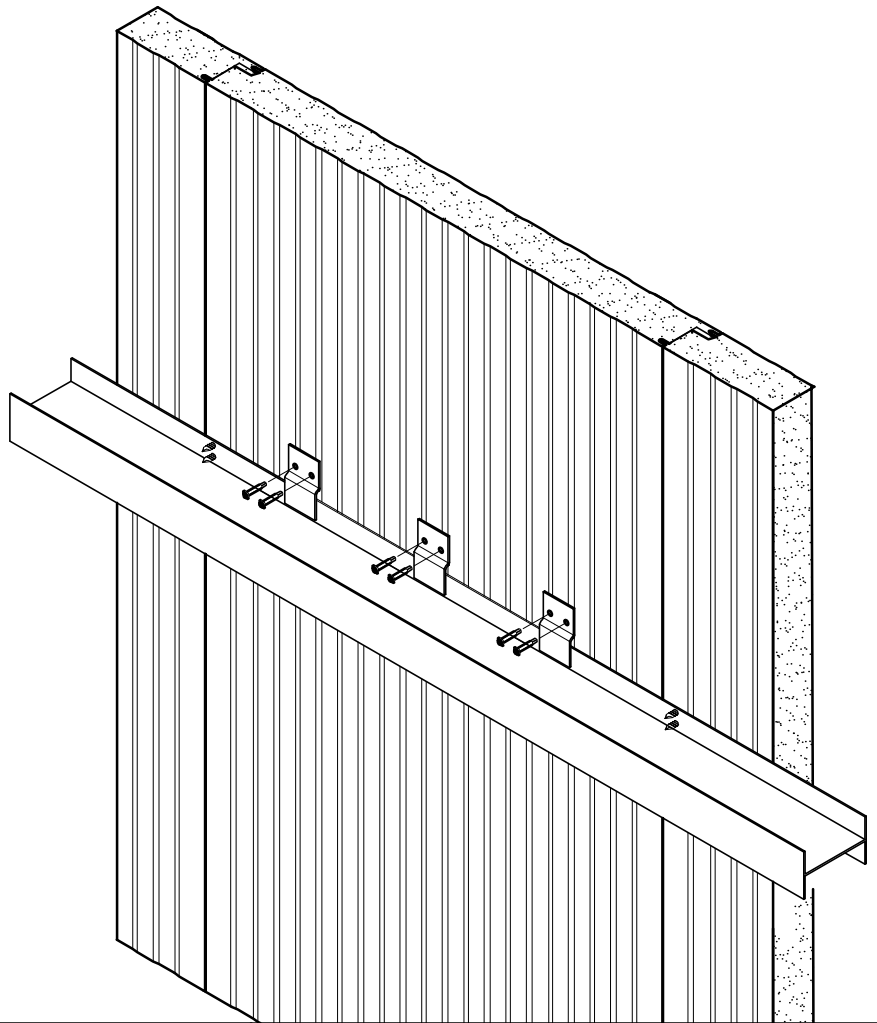
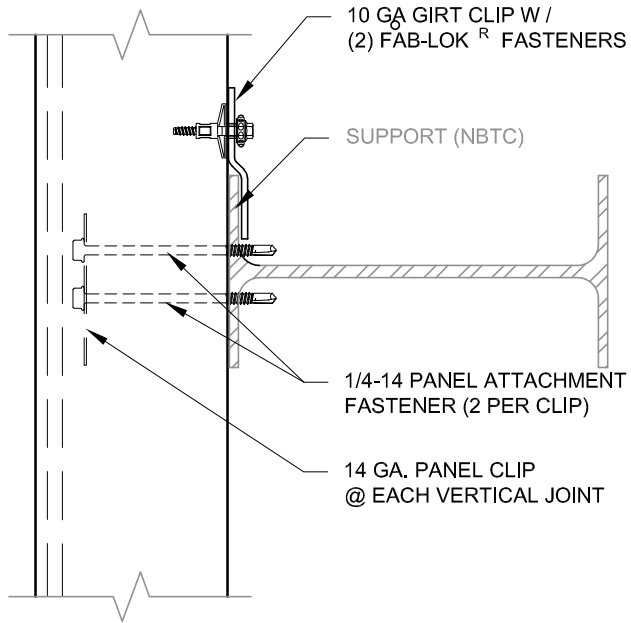


INTERNAL FASTENING
ISOMETRIC

DRAWN BY:
DBN

DATE:
9-23-2019

DRAWING NO.:
FST5

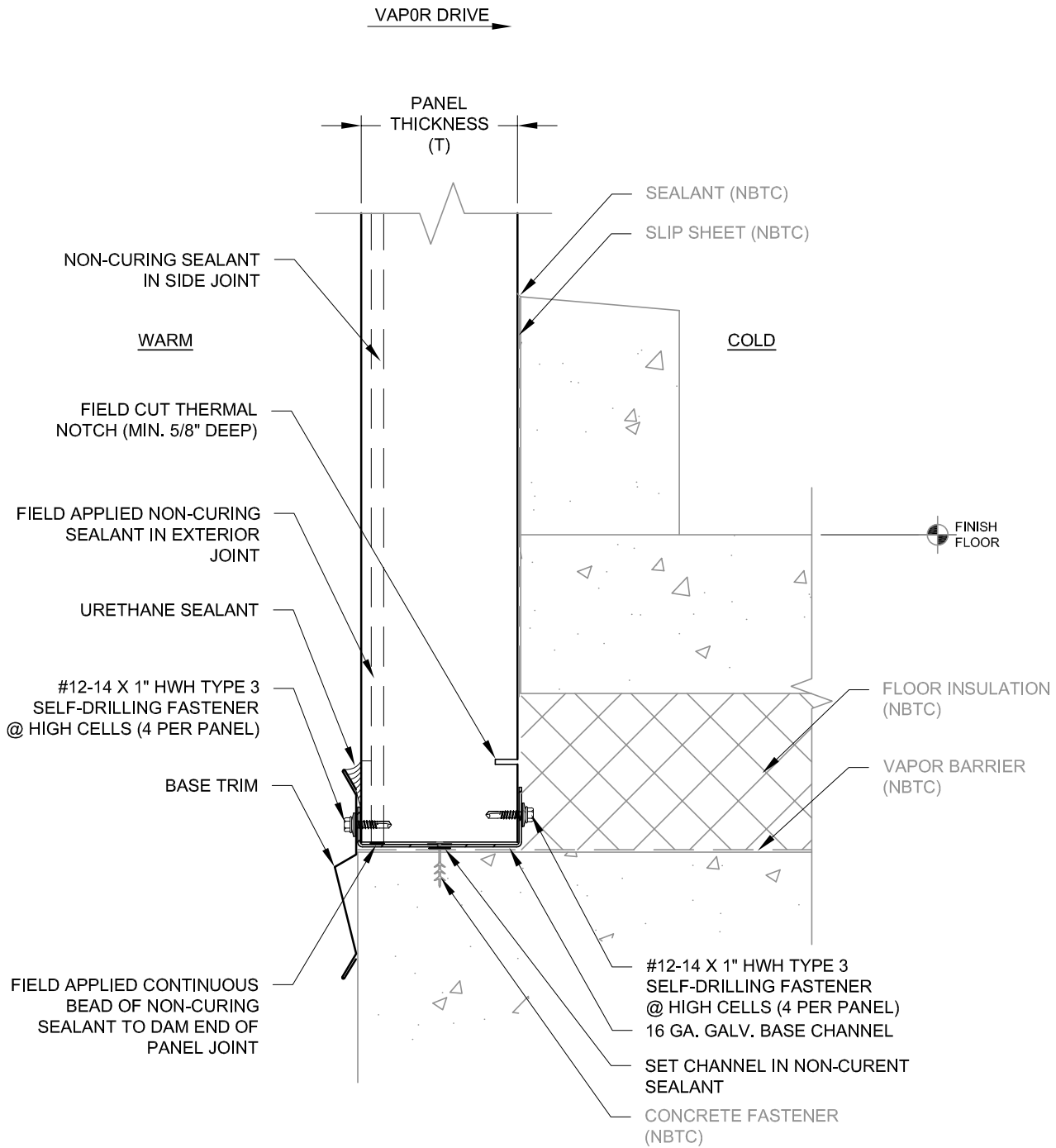


INTERNAL FASTENING W/ GIRT CLIPS
ISOMETRIC

DRAWN BY:
DBN

DATE:
9-23-2019

DRAWING NO.:
FST6



NBTC = NOT BY TRUECORE



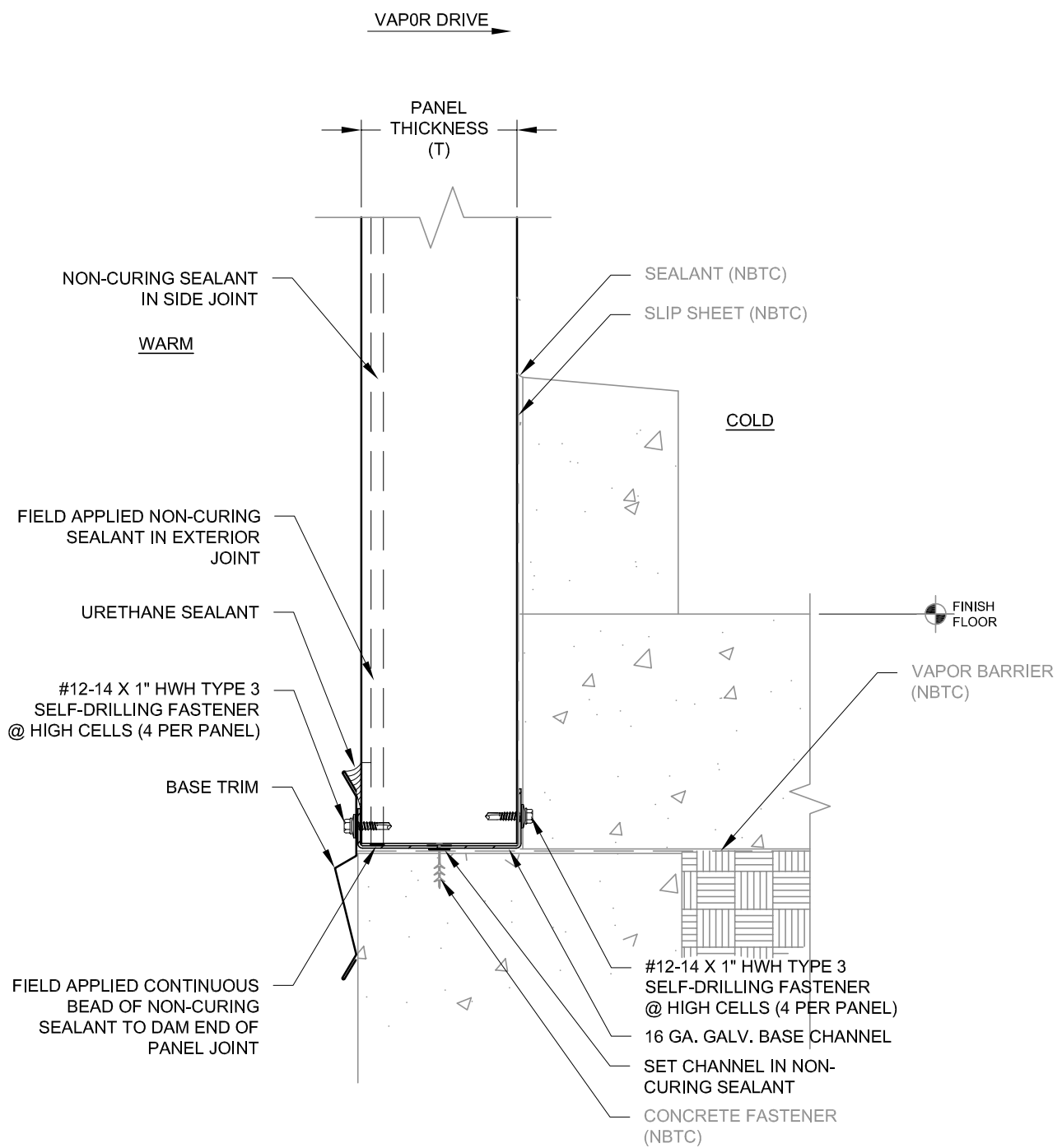
EXTERIOR BASE - FREEZER

DRAWN BY:
DBN

DATE:
9-23-2019

DRAWING NO.:

B1



NBTC = NOT BY TRUECORE



EXTERIOR BASE - COOLER

DRAWN BY: DBN	DATE: 9-23-2019	DRAWING NO.: B2
------------------	--------------------	--------------------

VAPOR DRIVE →

PANEL THICKNESS (T)

WARM

COLD

NON-CURING SEALANT IN SIDE JOINT

SEALANT (NBTC)

SLIP SHEET (NBTC)

FINISH FLOOR

FLOOR INSULATION (NBTC)

FIELD CUT THERMAL NOTCH (MIN. 5/8" DEEP)

VAPOR BARRIER (NBTC)

#12-14 X 1" HWH TYPE 3 SELF-DRILLING FASTENER @ HIGH CELLS (4 PER PANEL)

16 GA. GALV. BASE CHANNEL

FIELD APPLIED CONTINUOUS BEAD OF NON-CURING SEALANT TO DAM END OF PANEL JOINT

SET CHANNEL IN NON-CURING SEALANT

CONCRETE FASTENER (NBTC)

NBTC = NOT BY TRUECORE



INTERIOR PARTITION BASE FREEZER / DRY OR COOLER

DRAWN BY:
DBN

DATE:
9-23-2019

DRAWING NO.:

B3

VAPOR DRIVE →

PANEL THICKNESS (T)

COLD

COLDER

SEALANT IN SIDE JOINT

SEALANT (NBTC)

SLIP SHEET (NBTC)

FINISH FLOOR

FLOOR INSULATION (NBTC)

#12-14 X 1" HWH TYPE 3 SELF-DRILLING FASTENER @ HIGH CELLS (4 PER PANEL)

FIELD CUT THERMAL NOTCH (MIN. 5/8" DEEP)

16 GA. GALV. BASE CHANNEL

VAPOR BARRIER (NBTC)

FIELD APPLIED CONTINUOUS BEAD OF NON-CURING SEALANT TO DAM END OF PANEL JOINT

SET CHANNEL IN NON-CURING SEALANT

CONCRETE FASTENER (NBTC)

NBTC = NOT BY TRUECORE



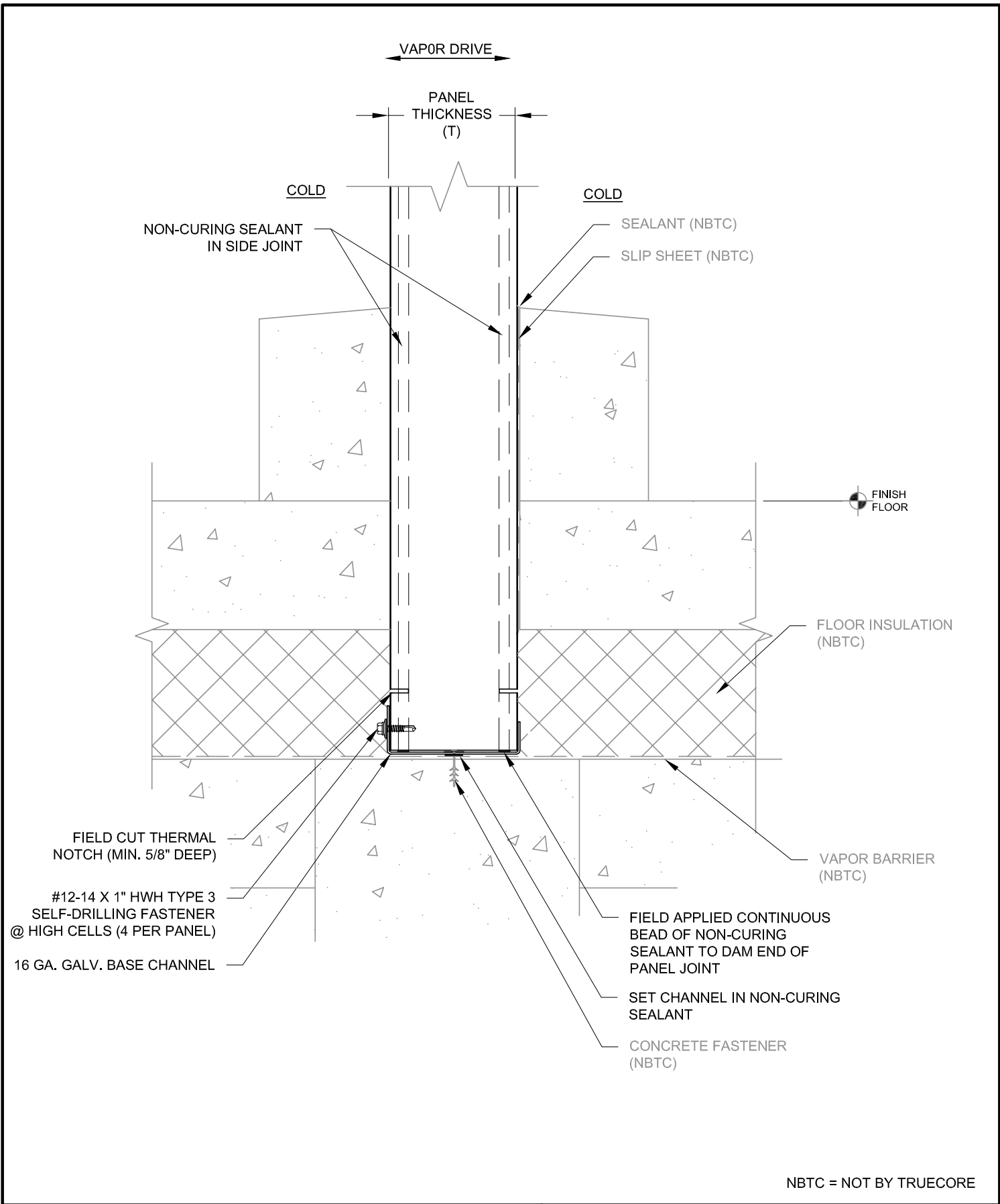
INTERIOR PARTITION BASE FREEZER / COOLER

DRAWN BY:
DBN

DATE:
9-23-2019

DRAWING NO.:

B4



INTERIOR PARTITION BASE
FREEZER / FREEZER

DRAWN BY:
DBN

DATE:
9-23-2019

DRAWING NO.:

B5

VAPOR DRIVE →

PANEL THICKNESS (T)

WARM

COLD

NON-CURING SEALANT IN SIDE JOINT

SEALANT (NBTC)

SLIP SHEET (NBTC)

CONCRETE CURB (NBTC)
TO BE POURED AFTER INSTALLATION
OF PANELS

SEALANT (NBTC)

SLIP SHEET (NBTC)

FINISH FLOOR

#12-14 X 1" HWH TYPE 3
SELF-DRILLING FASTENER
@ HIGH CELLS (4 PER PANEL)

16 GA. GALV. BASE ANGLE

FIELD APPLIED CONTINUOUS
BEAD OF NON-CURING
SEALANT TO DAM END OF
PANEL JOINT

SET ANGLE IN NON-CURING
SEALANT

CONCRETE FASTENER
(NBTC)

THERMAL BREAK
(NBTC)

NBTC = NOT BY TRUECORE



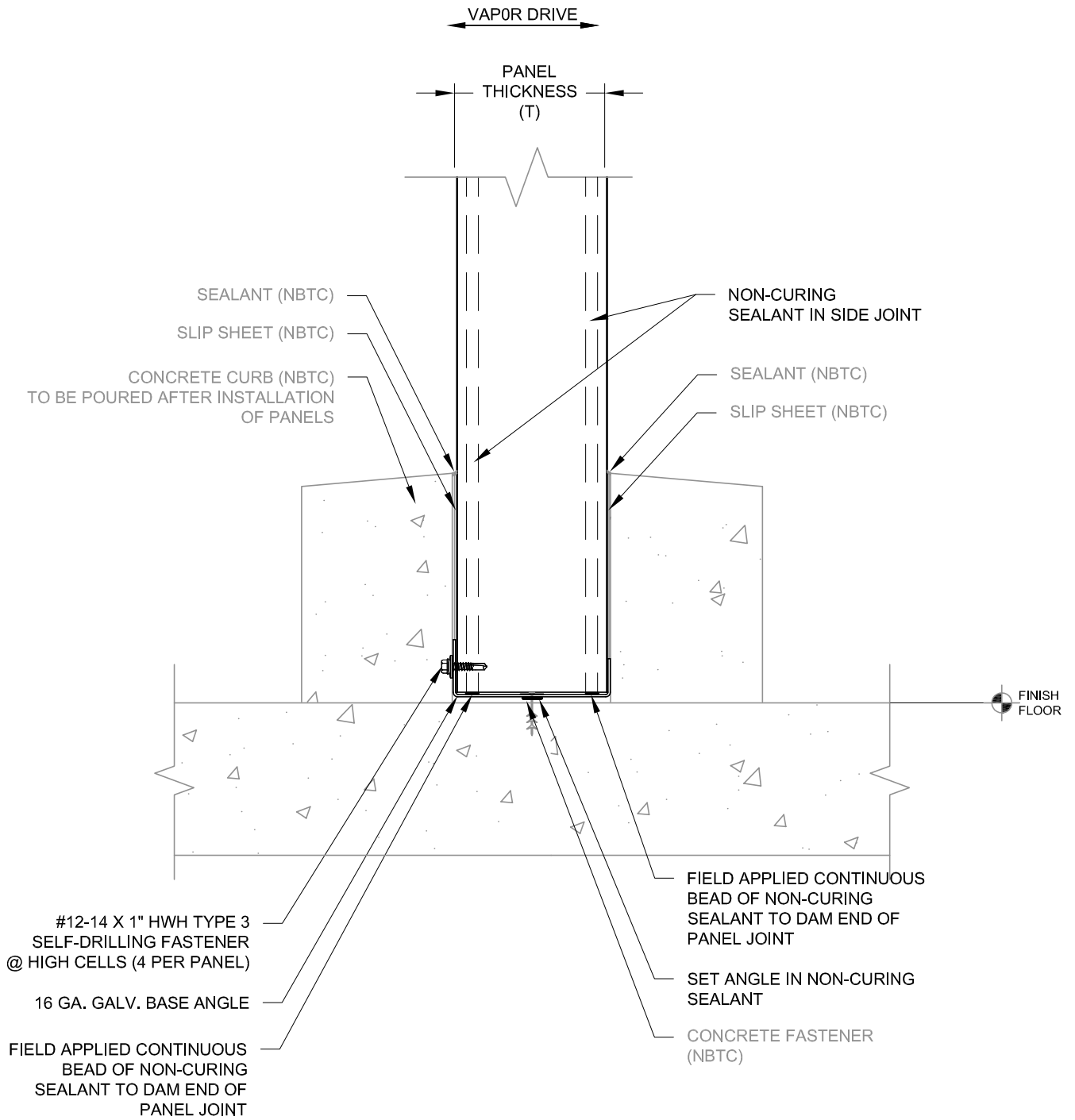
INTERIOR PARTITION BASE COOLER / DRY

DRAWN BY:
DBN

DATE:
9-23-2019

DRAWING NO.:

B6



NBTC = NOT BY TRUECORE



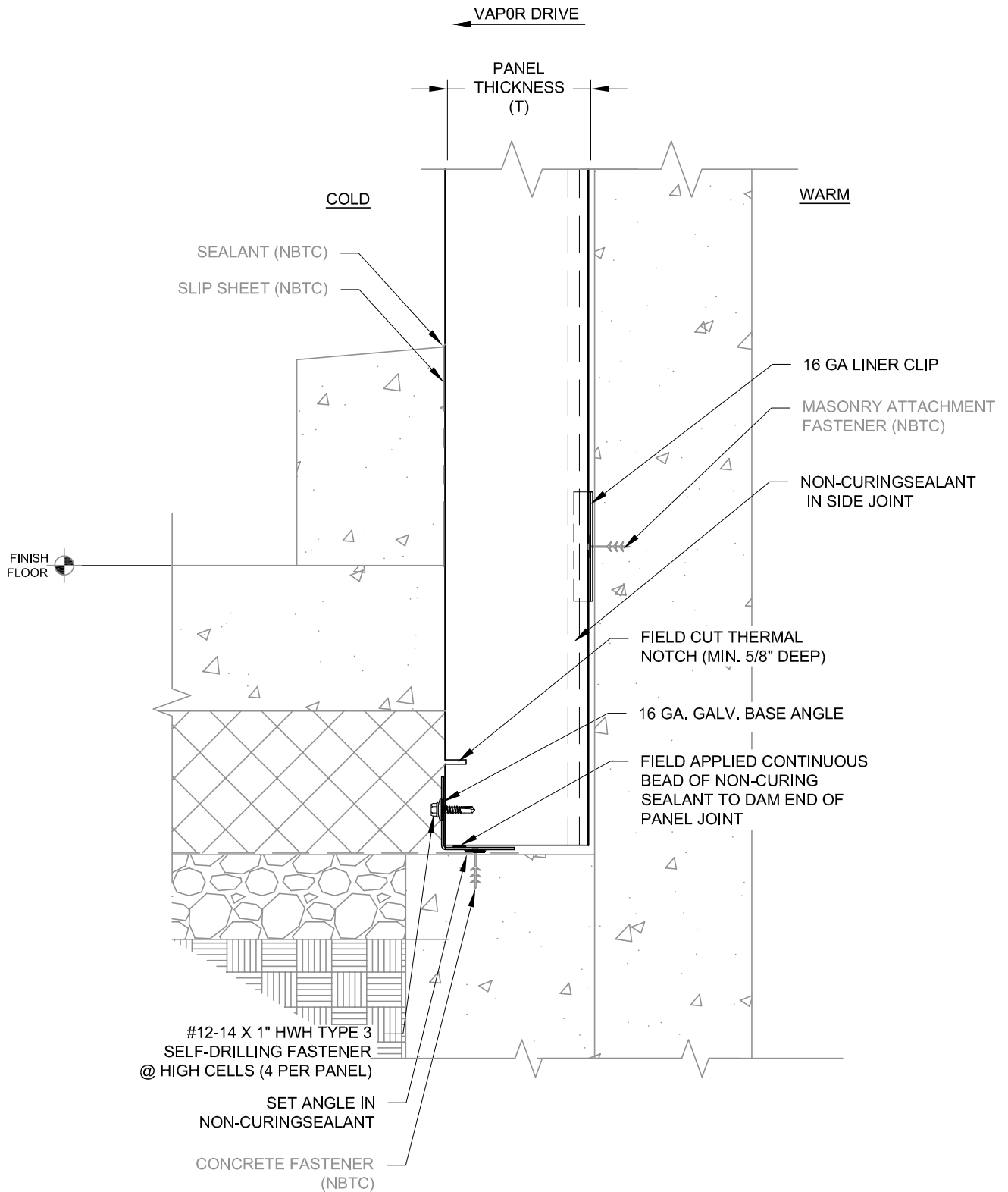
**INTERIOR PARTITION BASE
COOLER / COOLER OR AMB / AMB**

DRAWN BY:
DBN

DATE:
9-23-2019

DRAWING NO.:

B7



NBTC = NOT BY TRUECORE



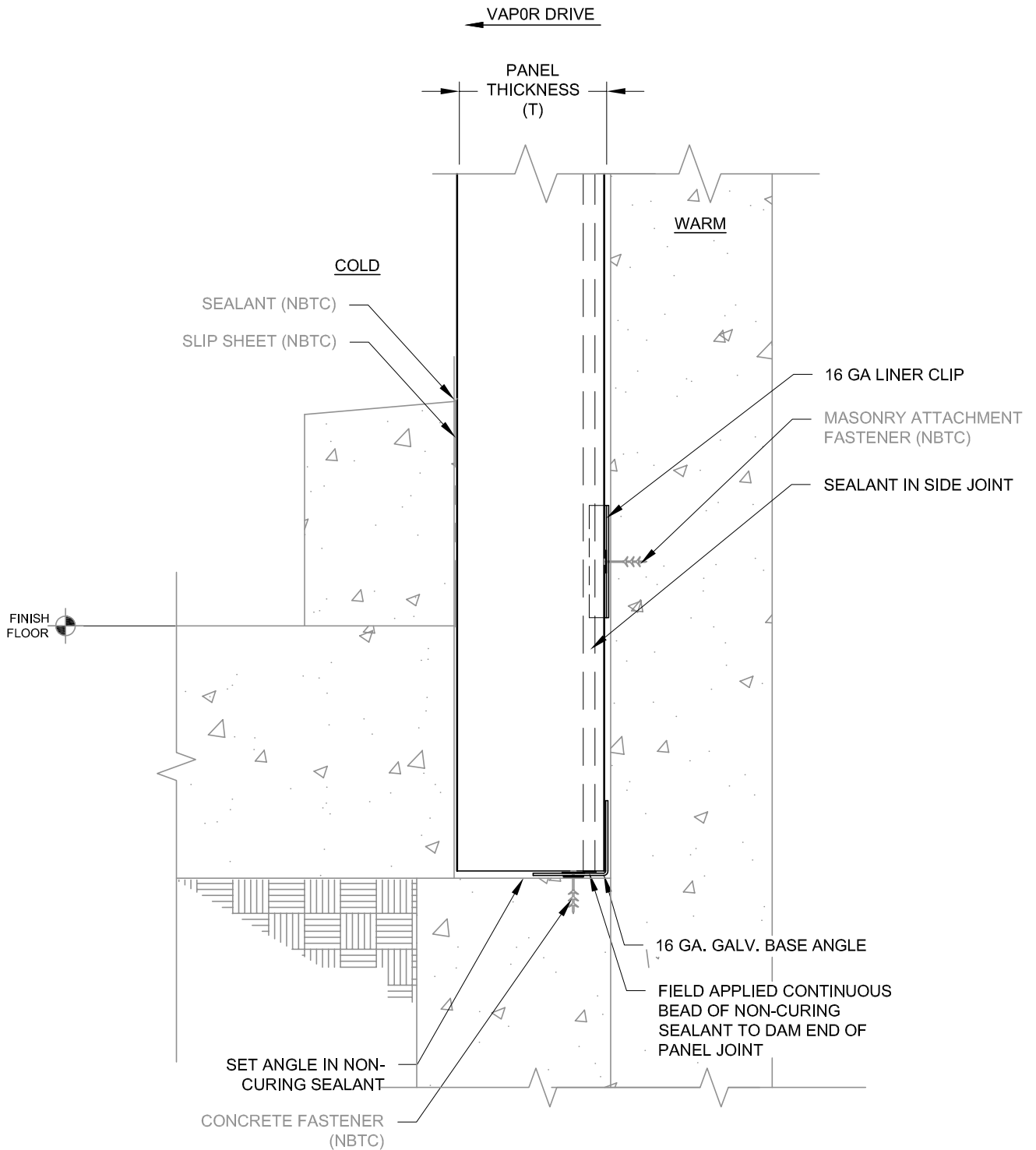
INTERIOR LINER BASE FREEZER

DRAWN BY:
DBN

DATE:
9-23-2019

DRAWING NO.:

B8



NBTC = NOT BY TRUECORE



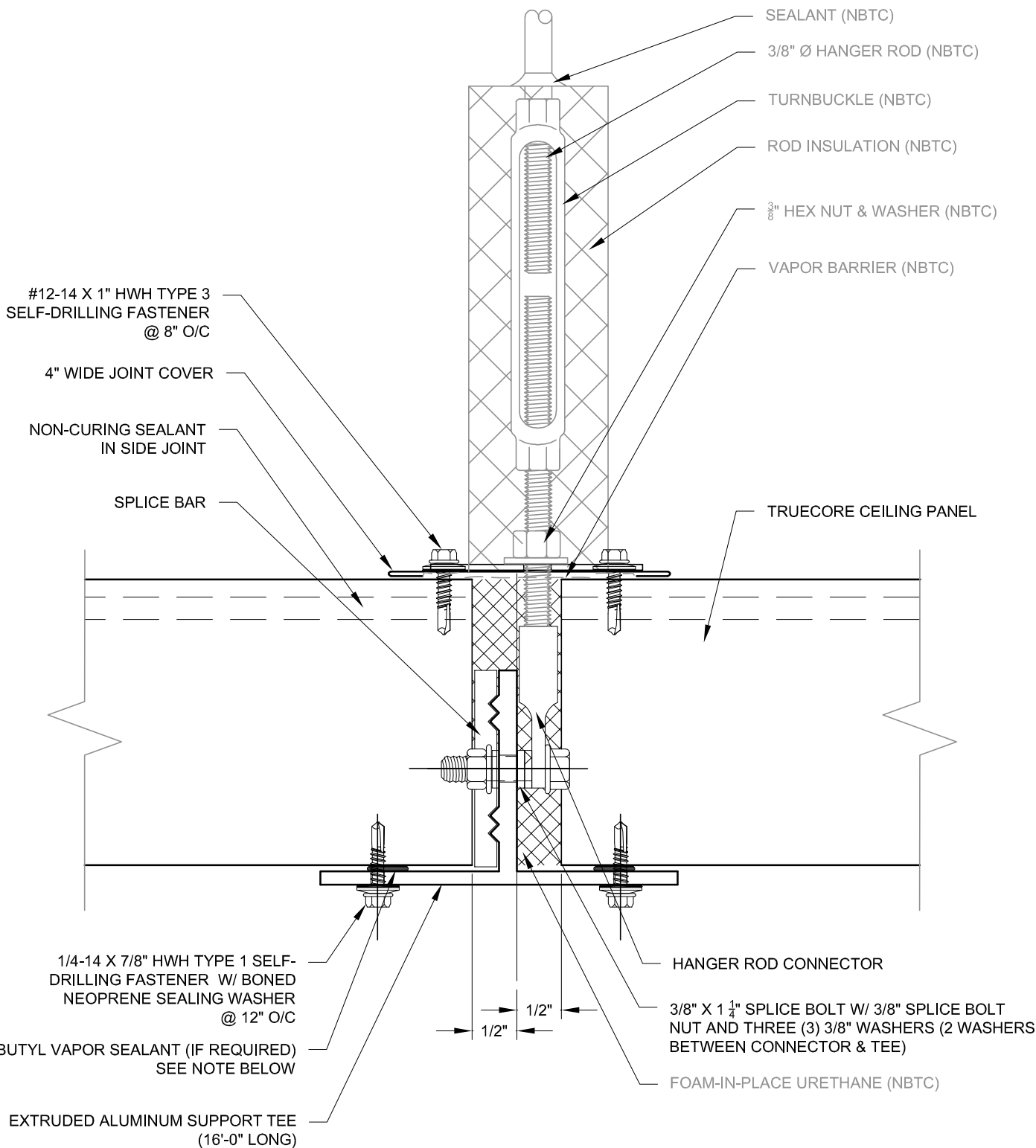
INTERIOR LINER BASE COOLER

DRAWN BY:
DBN

DATE:
9-23-2019

DRAWING NO.:

B9



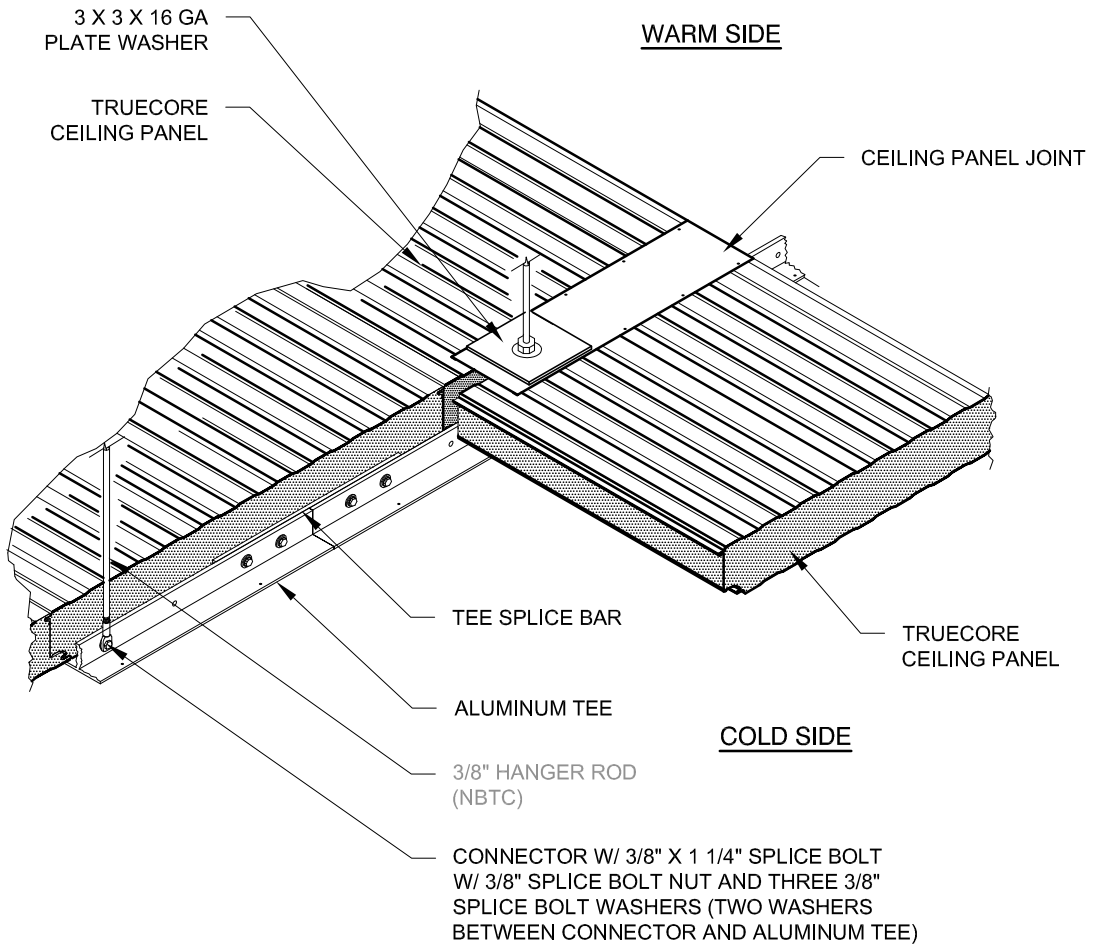
VAPOR SEALANT NOTE:
 INTERIOR VAPOR SEAL MAY BE COOLERS.
 PROJECT DESIGNER IS RESPONSIBLE FOR
 SPECIFYING REQUIREMENTS (GENERALLY: GREATER
 THAN 34° IN ADDITION TO HIGH HUMIDITY

NBTC = NOT BY TRUECORE



**CEILING TEE SUPPORT
 FREEZER AND COOLER**

DRAWN BY: DBN	DATE: 9-23-2019	DRAWING NO.: CLG1
------------------	--------------------	----------------------

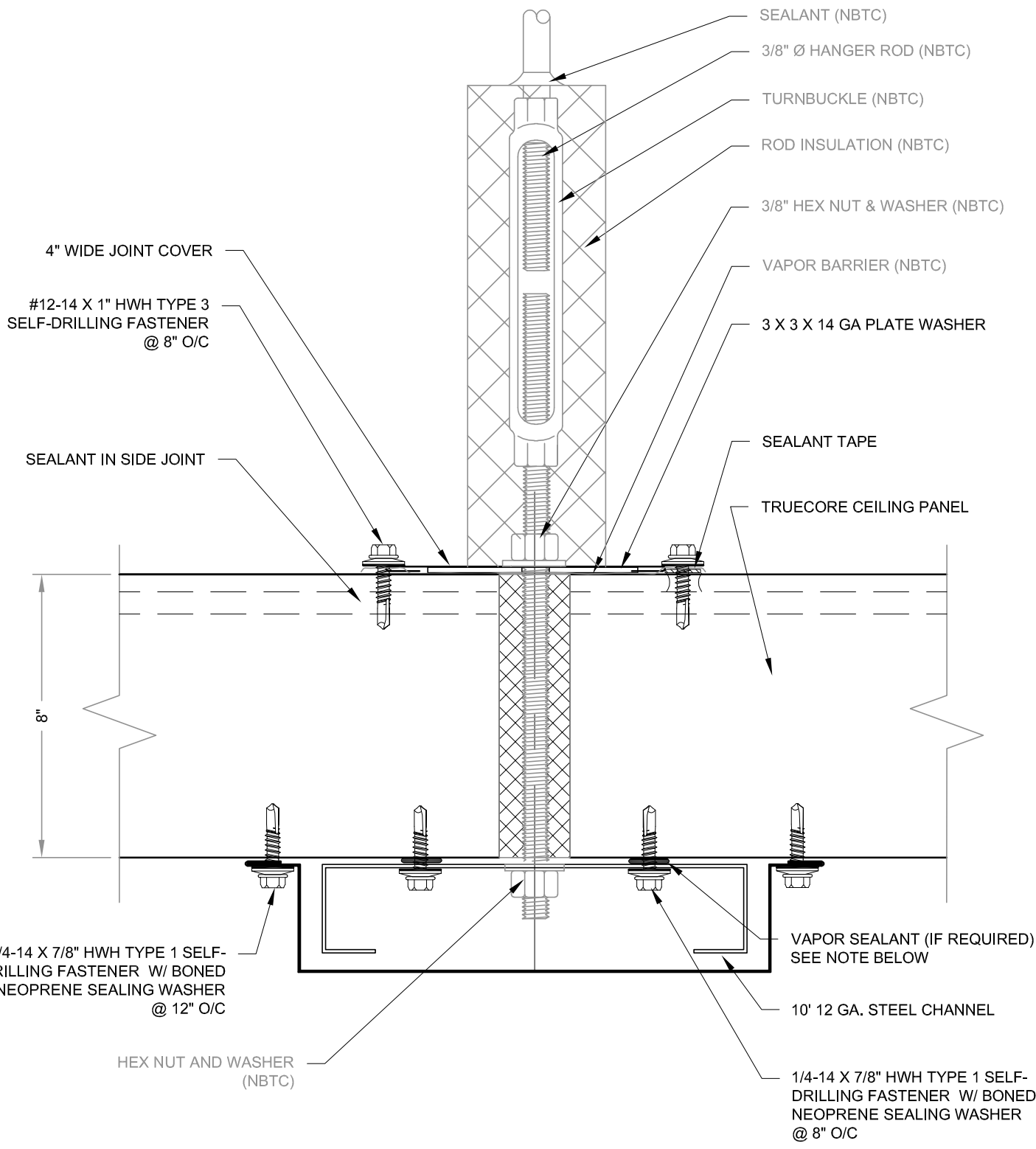


NBTC = NOT BY TRUECORE



**CEILING TEE SUPPORT (ISOMETRIC)
FREEZER AND COOLER**

DRAWN BY: DBN	DATE: 9-23-2019	DRAWING NO.: CLG2
------------------	--------------------	----------------------



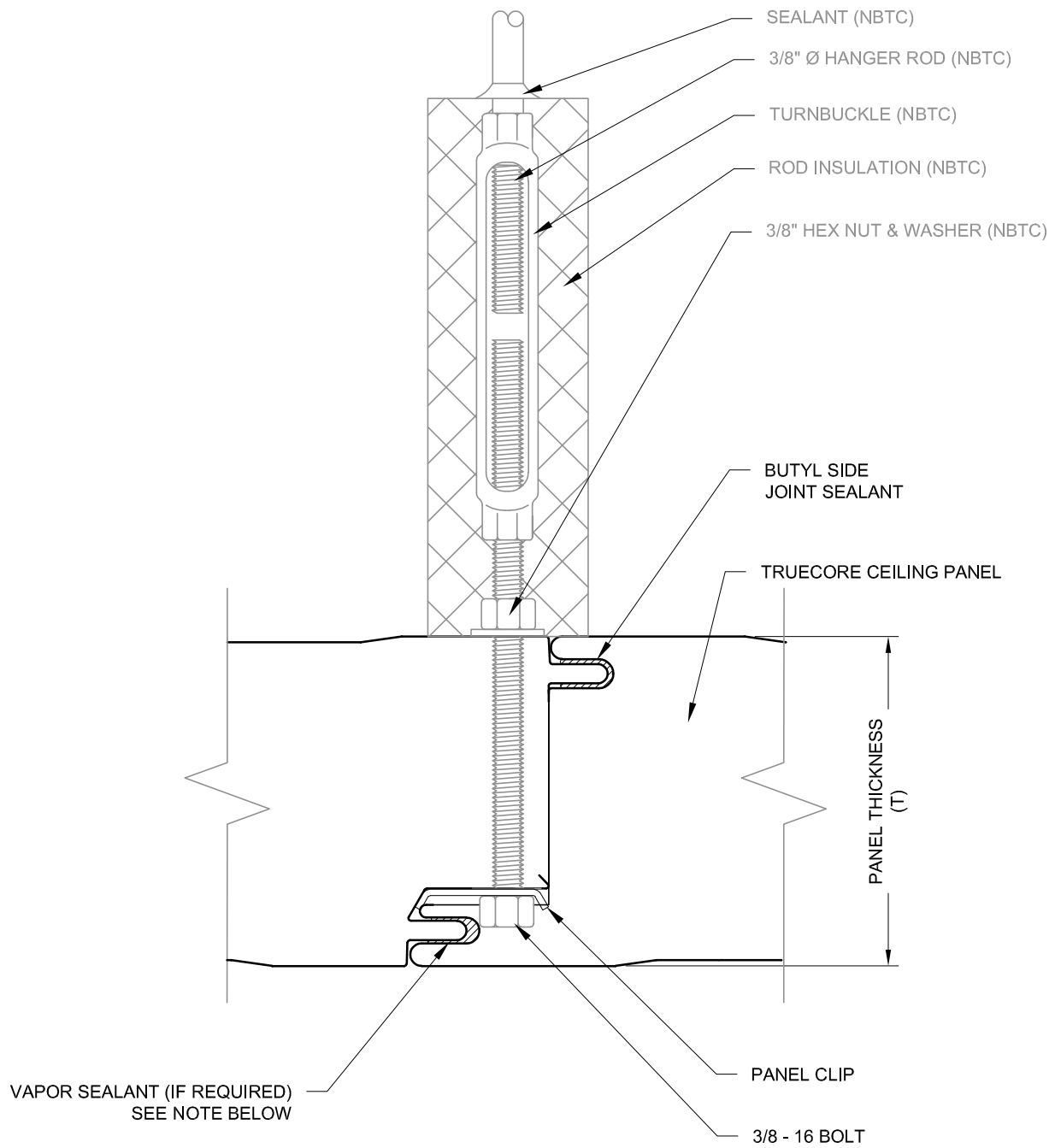
VAPOR SEALANT NOTE:
 INTERIOR VAPOR SEAL MAY BE COOLERS.
 PROJECT DESIGNER IS RESPONSIBLE FOR
 SPECIFYING REQUIREMENTS (GENERALLY: GREATER
 THAN 34° IN ADDITION TO HIGH HUMIDITY

NBTC = NOT BY TRUECORE



CEILING CHANNEL SUPPORT
 FREEZER AND COOLER

DRAWN BY: DBN	DATE: 9-23-2019	DRAWING NO.: CLG3
------------------	--------------------	----------------------



VAPOR SEALANT NOTE:
 INTERIOR VAPOR SEAL MAY BE COOLERS.
 PROJECT DESIGNER IS RESPONSIBLE FOR
 SPECIFYING REQUIREMENTS (GENERALLY: GREATER
 THAN 34° IN ADDITION TO HIGH HUMIDITY

NBTC = NOT BY TRUECORE



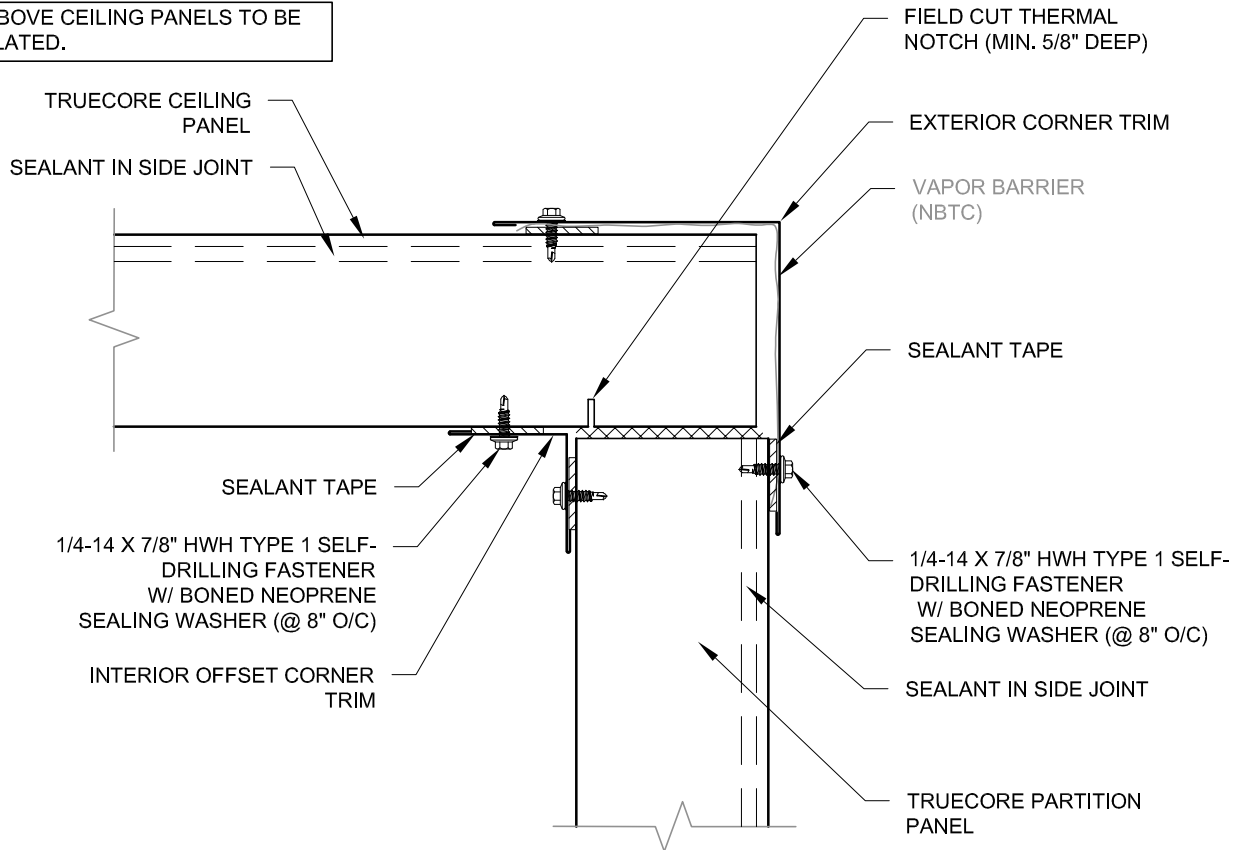
**ATTACHMENT AT INTERMEDIATE SUPPORT
 FREEZER AND COOLER**

DRAWN BY:
 DBN

DATE:
 9-23-2019

DRAWING NO.:
 CLG4

AREA ABOVE CEILING PANELS TO BE VENTILATED.



NBTC = NOT BY TRUECORE



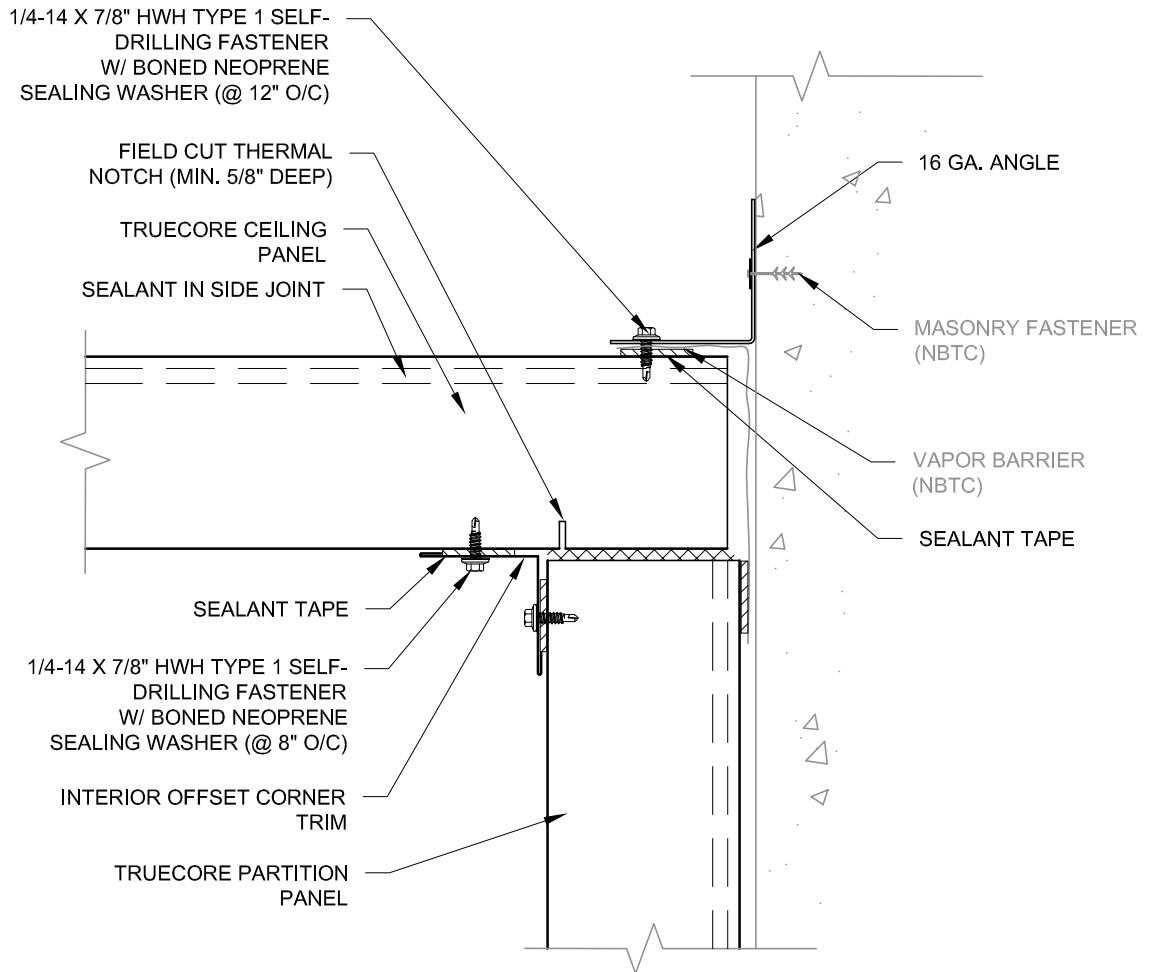
INTERIOR PARTITION AT CEILING END
FREEZER AND COOLER

DRAWN BY:
DBN

DATE:
9-23-2019

DRAWING NO.:
CLG5

AREA ABOVE CEILING PANELS TO BE VENTILATED.



NBTC = NOT BY TRUECORE



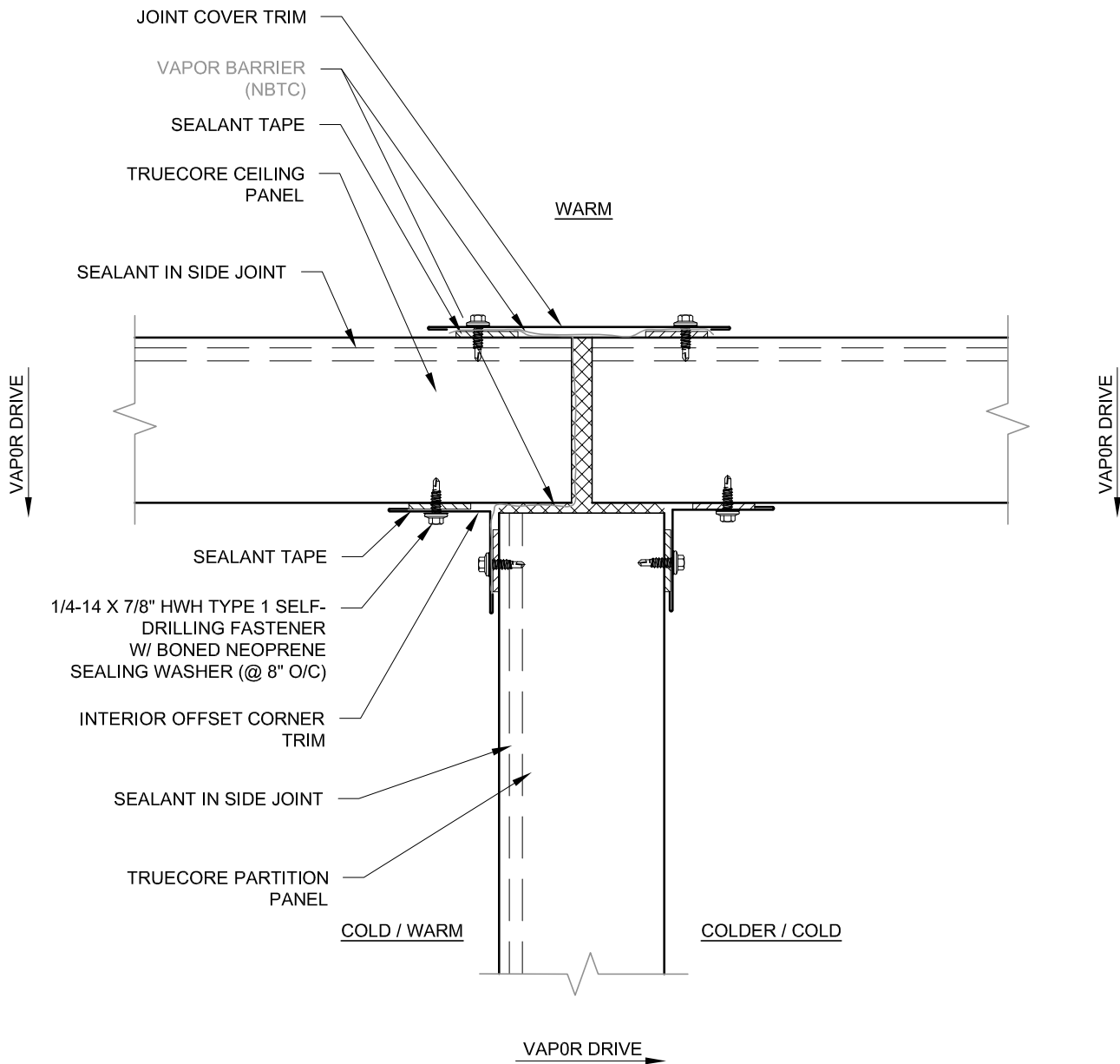
INTERIOR LINER AT CEILING EDGE
FREEZER AND COOLER

DRAWN BY:
DBN

DATE:
9-23-2019

DRAWING NO.:
CLG6

AREA ABOVE CEILING PANELS TO BE VENTILATED.



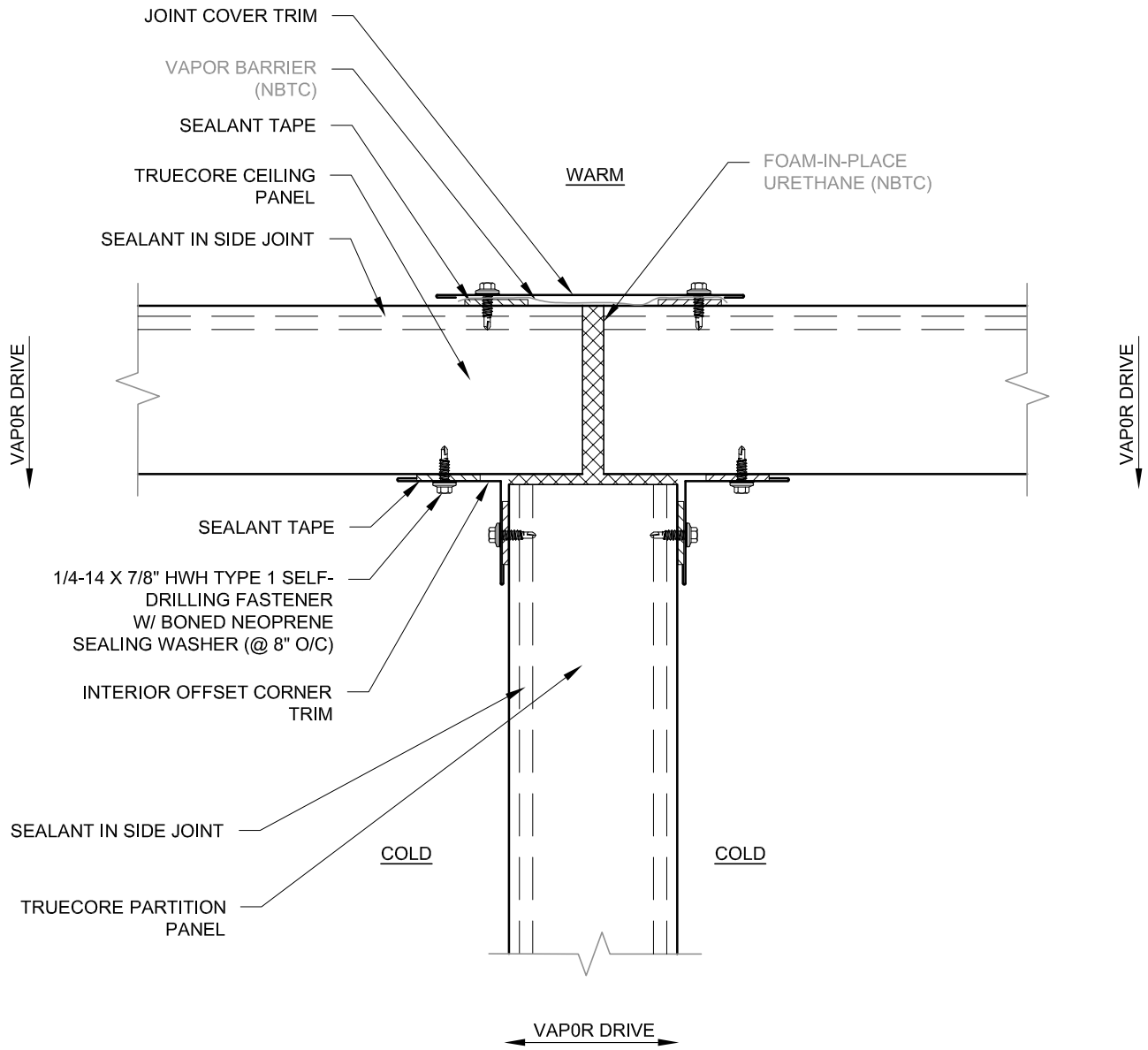
NBTC = NOT BY TRUECORE



INTERIOR PARTITION AT CEILING FREEZER / COOLER OR COOLER / AMB.

DRAWN BY: DBN	DATE: 9-23-2019	DRAWING NO.: CLG7
------------------	--------------------	----------------------

AREA ABOVE CEILING PANELS TO BE VENTILATED.



NBTC = NOT BY TRUECORE



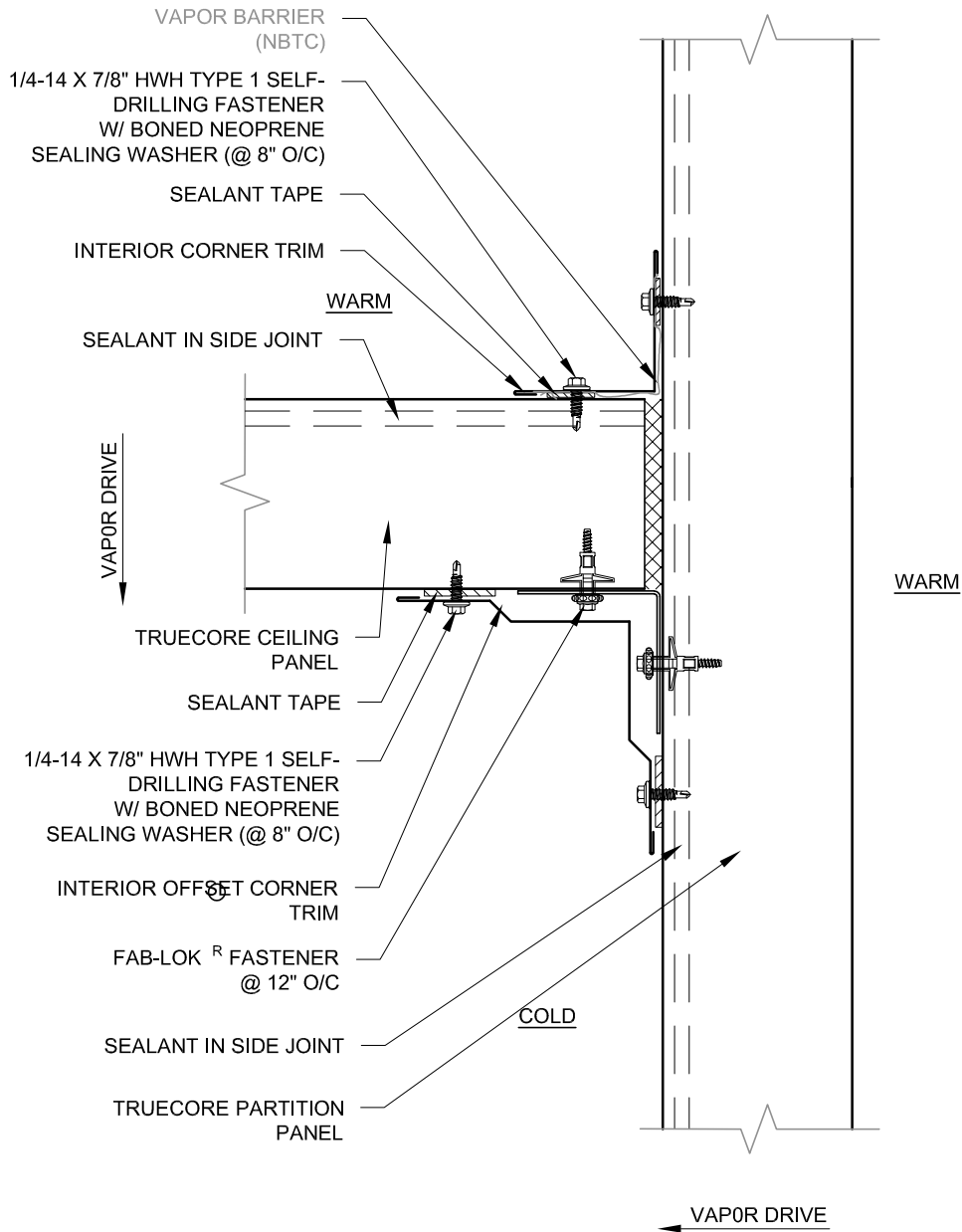
INTERIOR PARTITION AT CEILING FREEZER / FREEZER OR COOLER / COOLER

DRAWN BY:
DBN

DATE:
9-23-2019

DRAWING NO.:
CLG8

AREA ABOVE CEILING PANELS TO BE VENTILATED.



NBTC = NOT BY TRUECORE

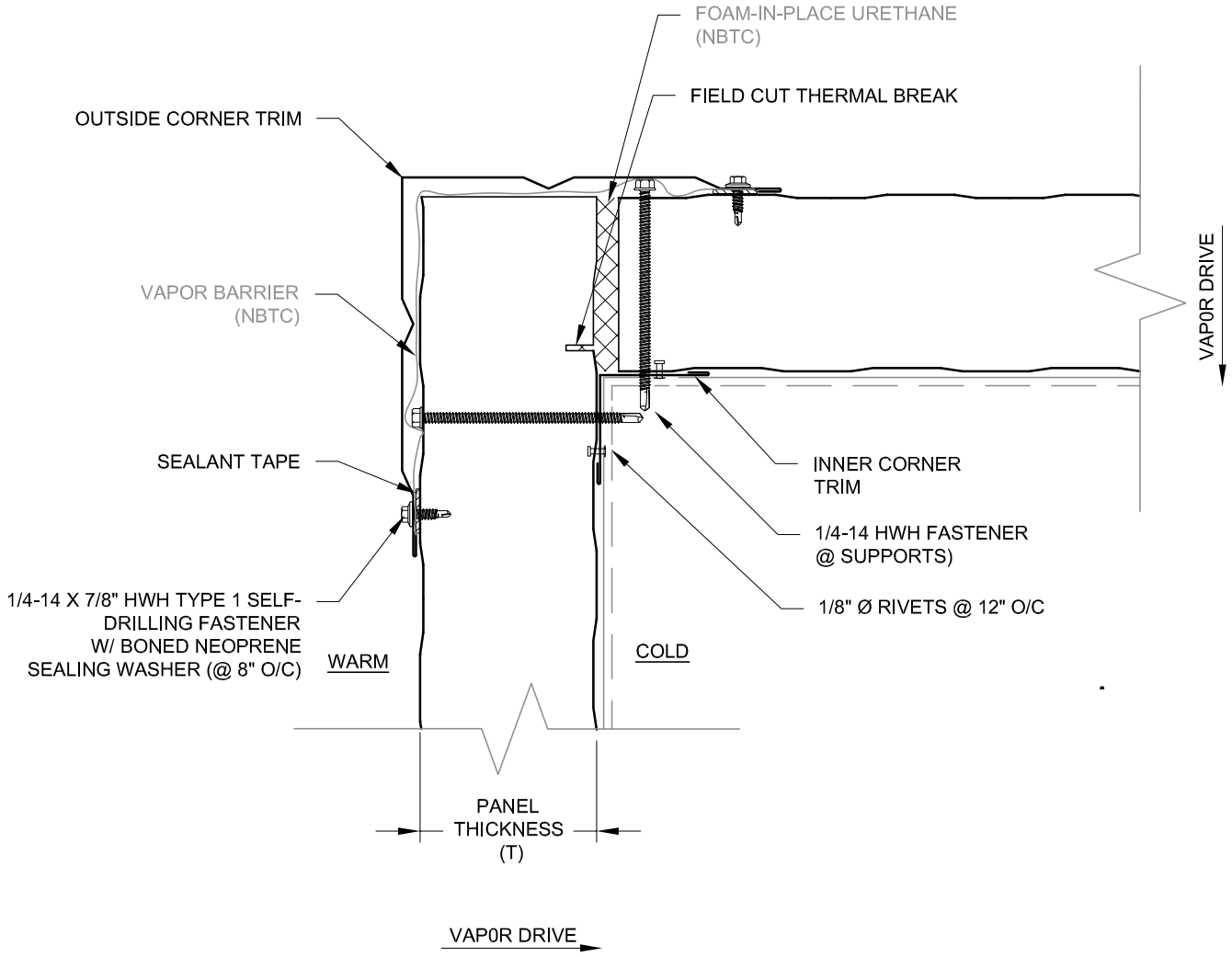


INTERIOR CEILING TO HIGH WALL
FREEZER AND COOLER

DRAWN BY:
DBN

DATE:
9-23-2019

DRAWING NO.:
CLG9



NBTC = NOT BY TRUECORE



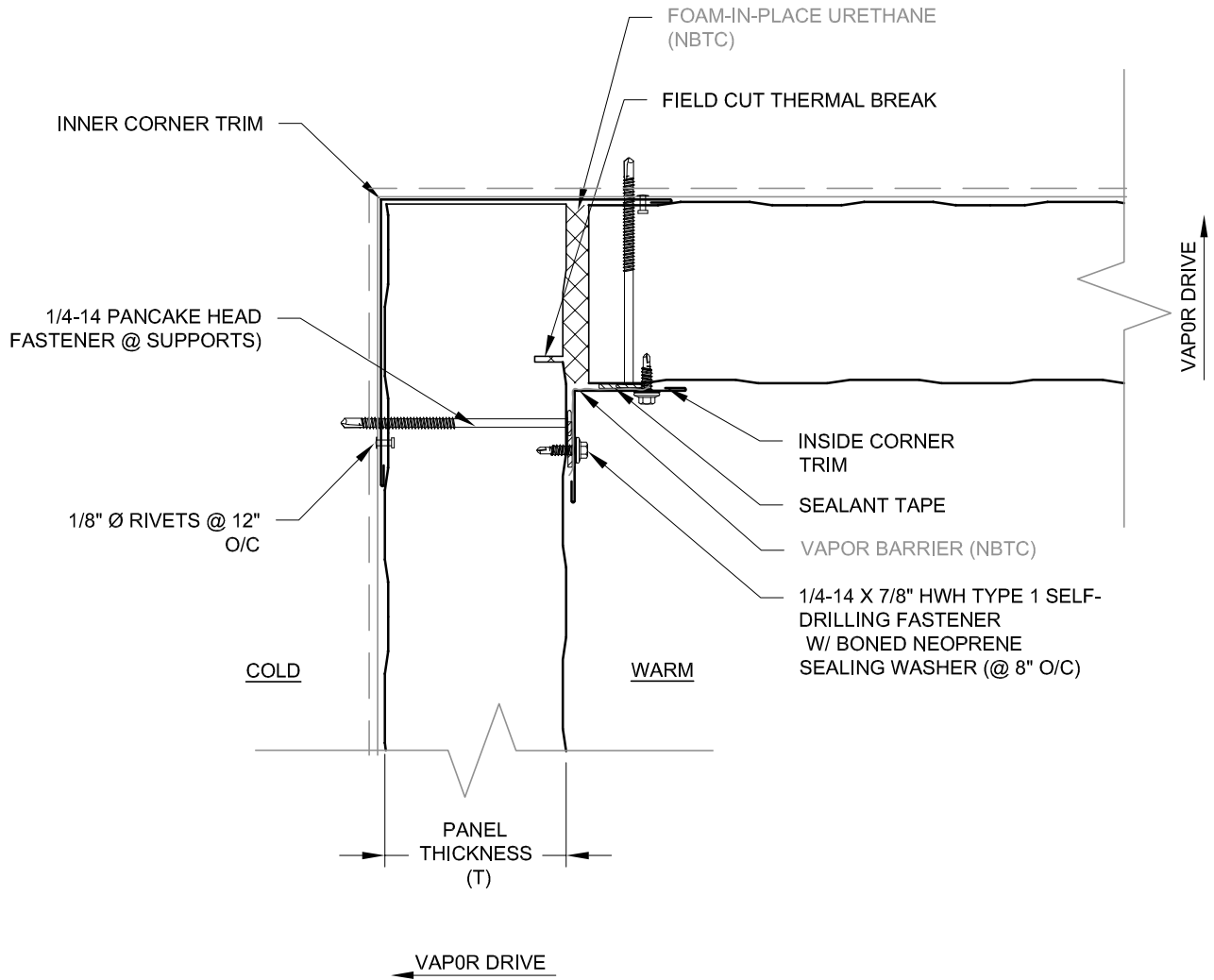
EXTERIOR OUTSIDE CORNER
FREEZER AND COOLER

DRAWN BY:
DBN

DATE:
9-23-2019

DRAWING NO.:

C1



NBTC = NOT BY TRUECORE



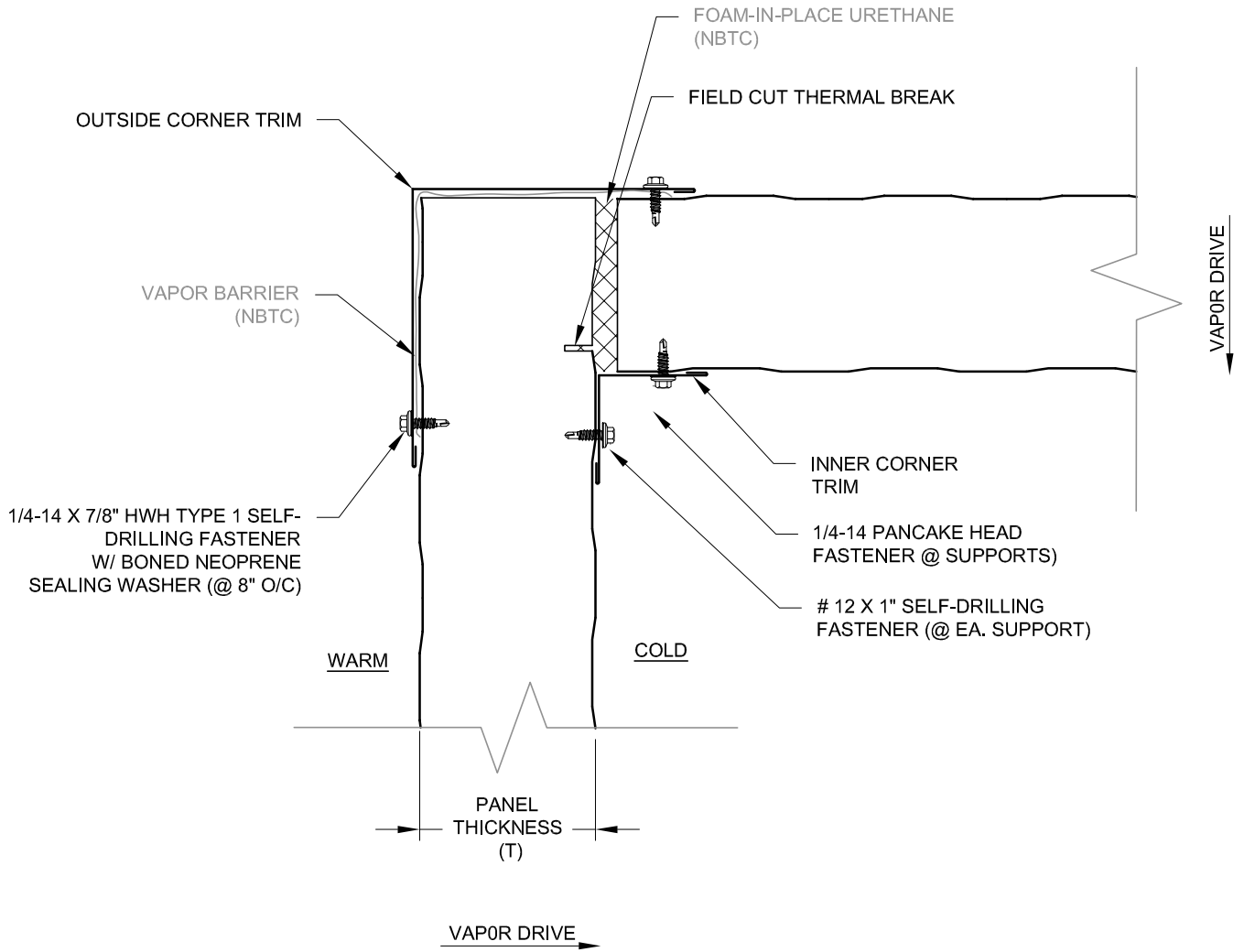
EXTERIOR INSIDE CORNER
FREEZER AND COOLER

DRAWN BY:
DBN

DATE:
9-23-2019

DRAWING NO.:

C2



NBTC = NOT BY TRUECORE



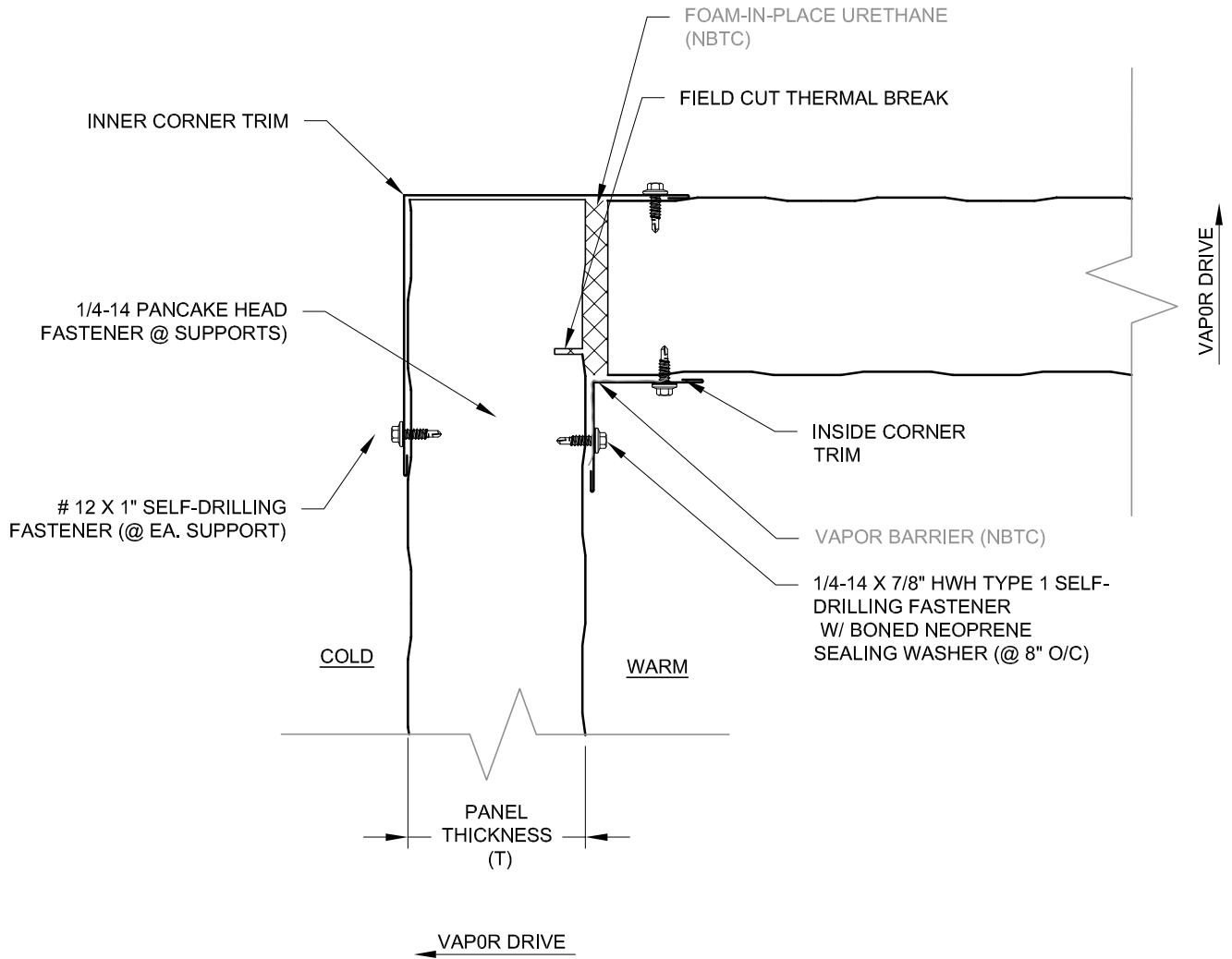
INTERIOR OUTSIDE CORNER
FREEZER AND COOLER

DRAWN BY:
DBN

DATE:
9-23-2019

DRAWING NO.:

C3



NBTC = NOT BY TRUECORE



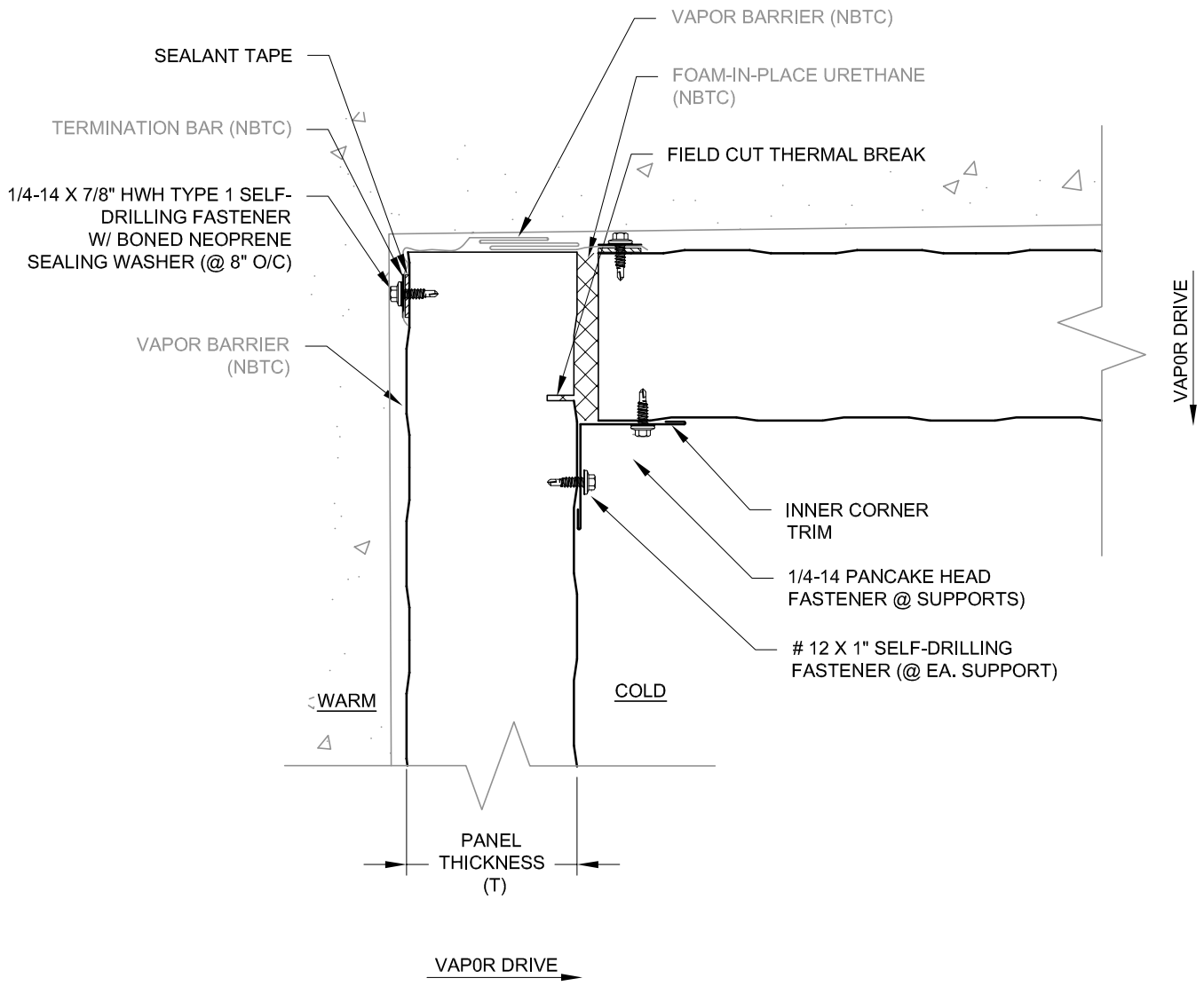
INTERIOR INSIDE CORNER
FREEZER AND COOLER

DRAWN BY:
DBN

DATE:
9-23-2019

DRAWING NO.:

C4

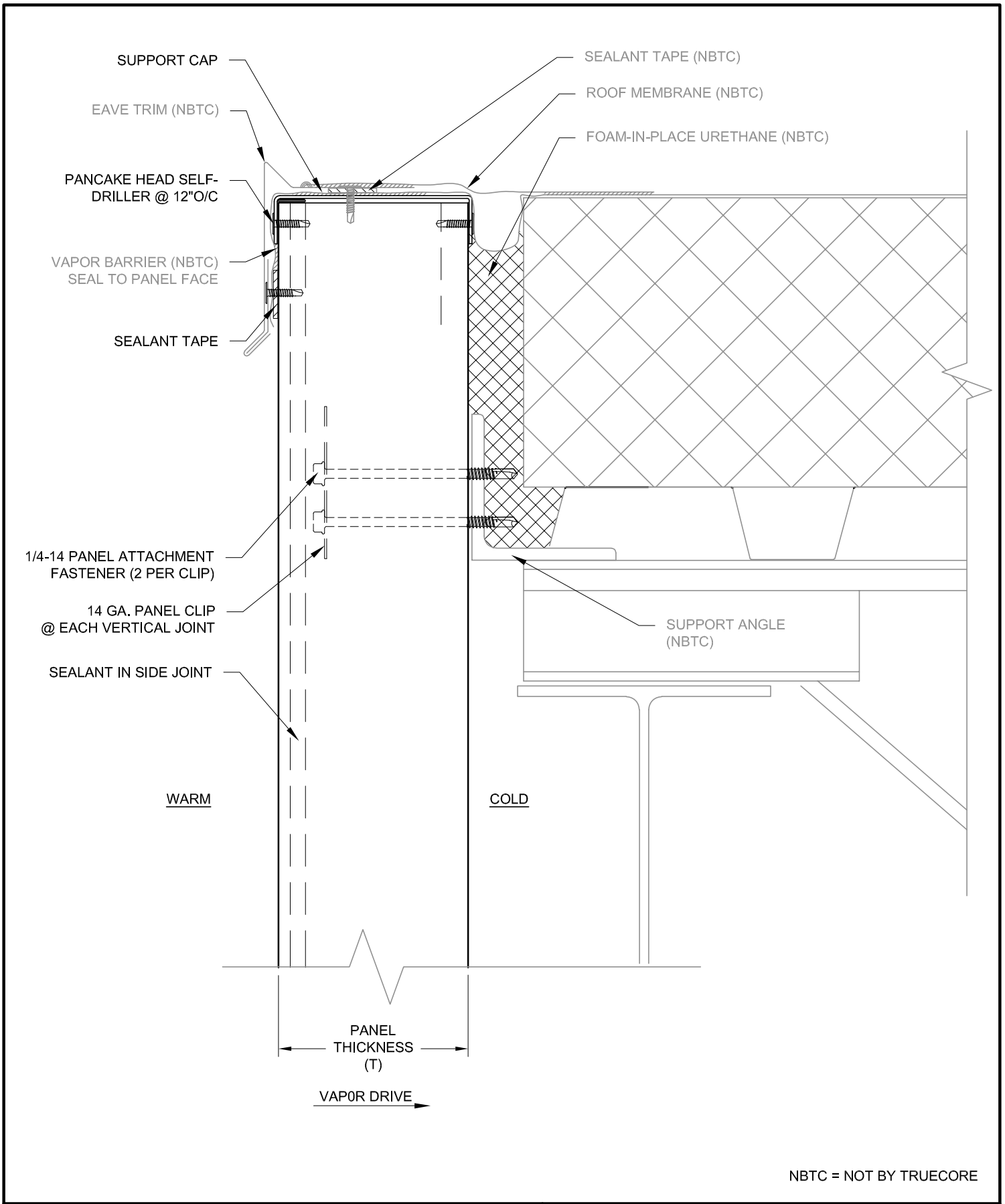


NBTC = NOT BY TRUECORE



LINER INSIDE CORNER
FREEZER AND COOLER

DRAWN BY: DBN	DATE: 9-23-2019	DRAWING NO.:	C5
------------------	--------------------	--------------	----



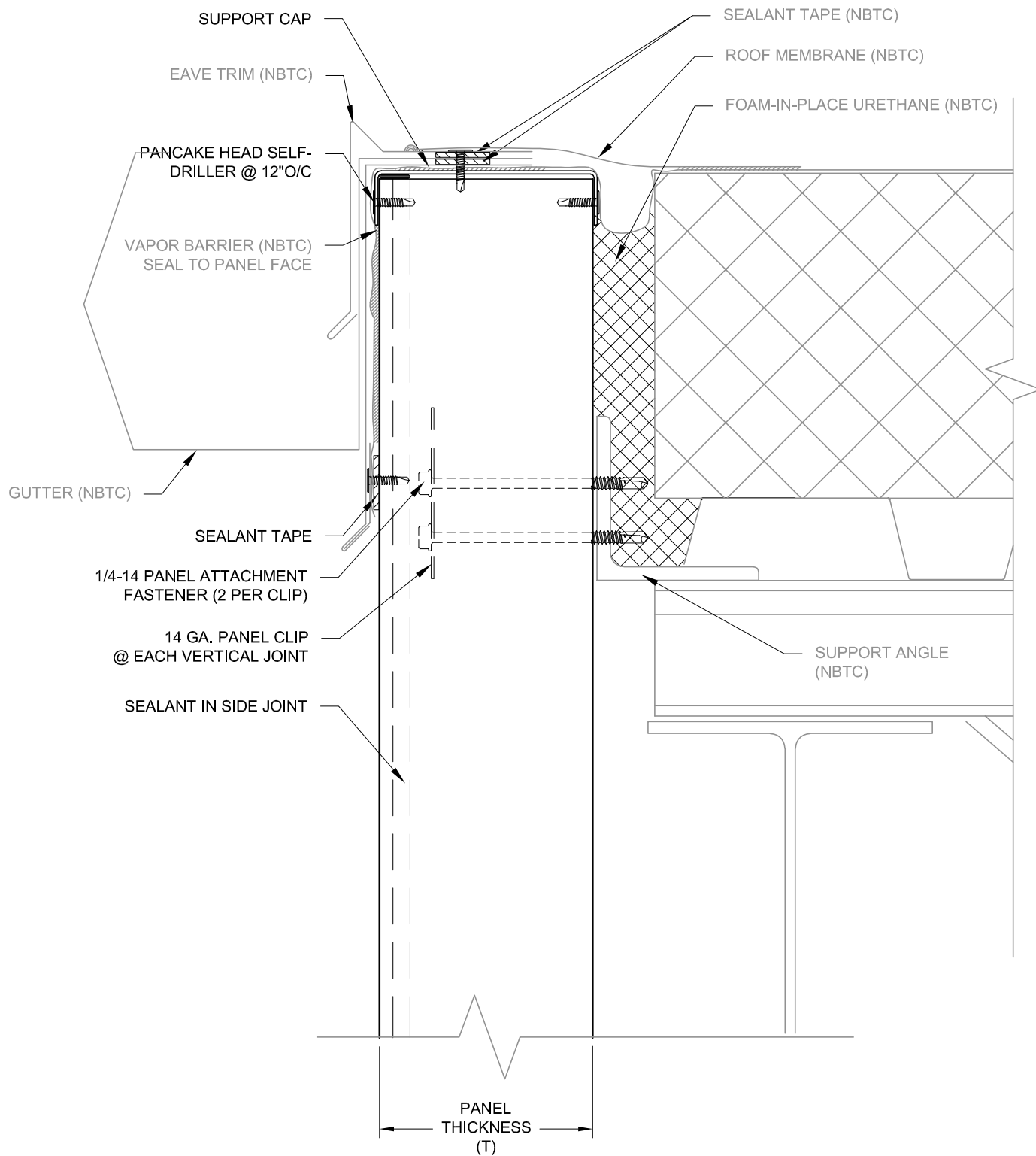
EXTERIOR EAVE
FREEZER AND COOLER

DRAWN BY:
DBN

DATE:
9-23-2019

DRAWING NO.:

T1



NBTC = NOT BY TRUECORE



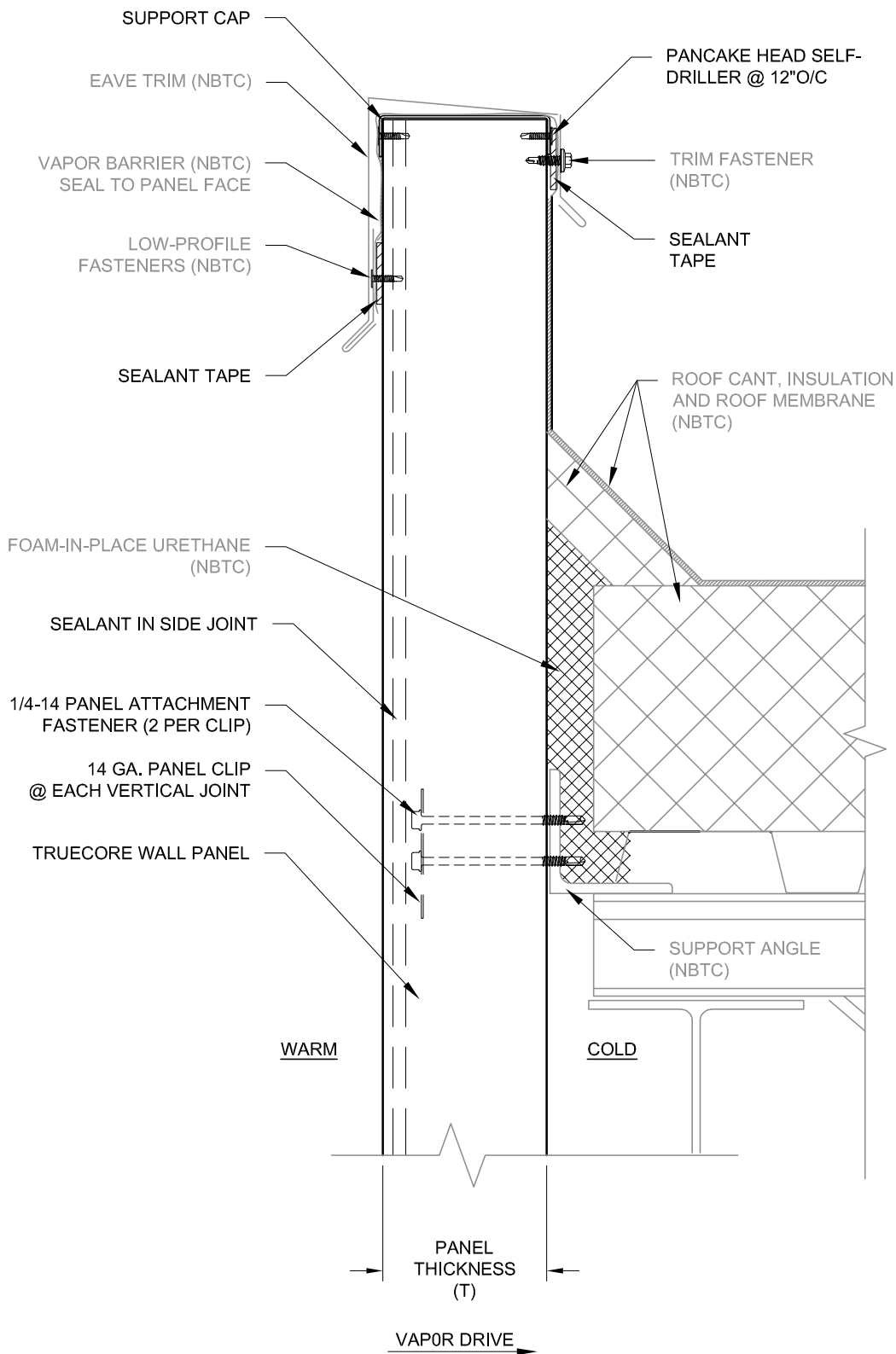
EXTERIOR GUTTER FREEZER AND COOLER

DRAWN BY:
DBN

DATE:
9-23-2019

DRAWING NO.:

T2



NBTC = NOT BY TRUECORE



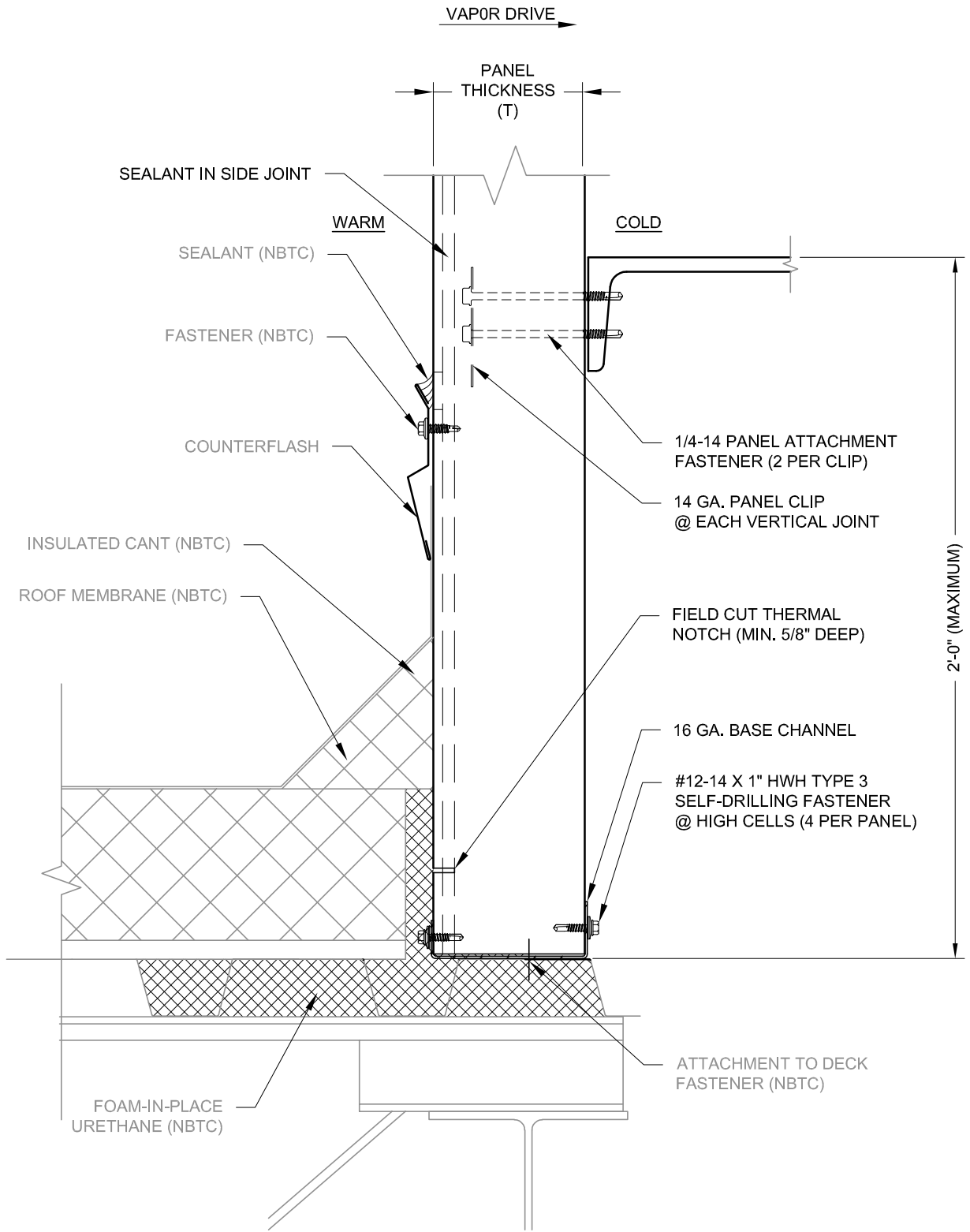
EXTERIOR PARAPET FREEZER AND COOLER

DRAWN BY:
DBN

DATE:
9-23-2019

DRAWING NO.:

T3



NBTC = NOT BY TRUECORE



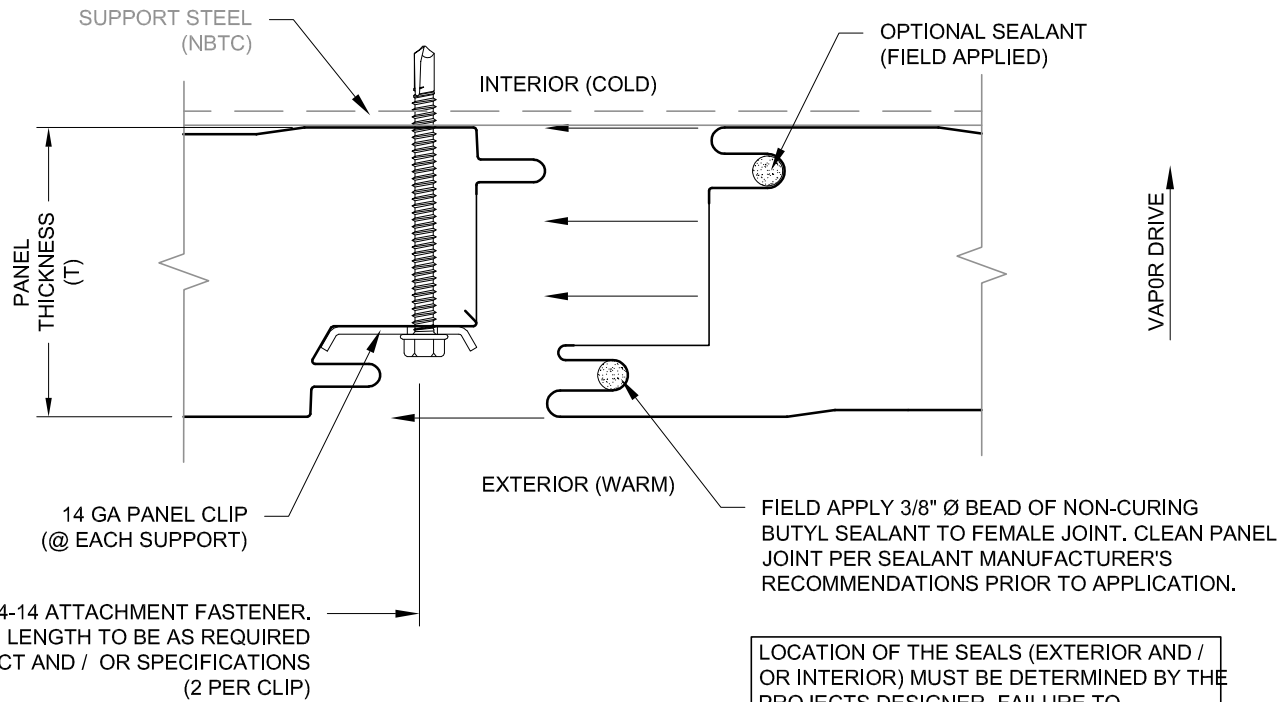
HI - LO ROOF INTERSECT

DRAWN BY:
DBN

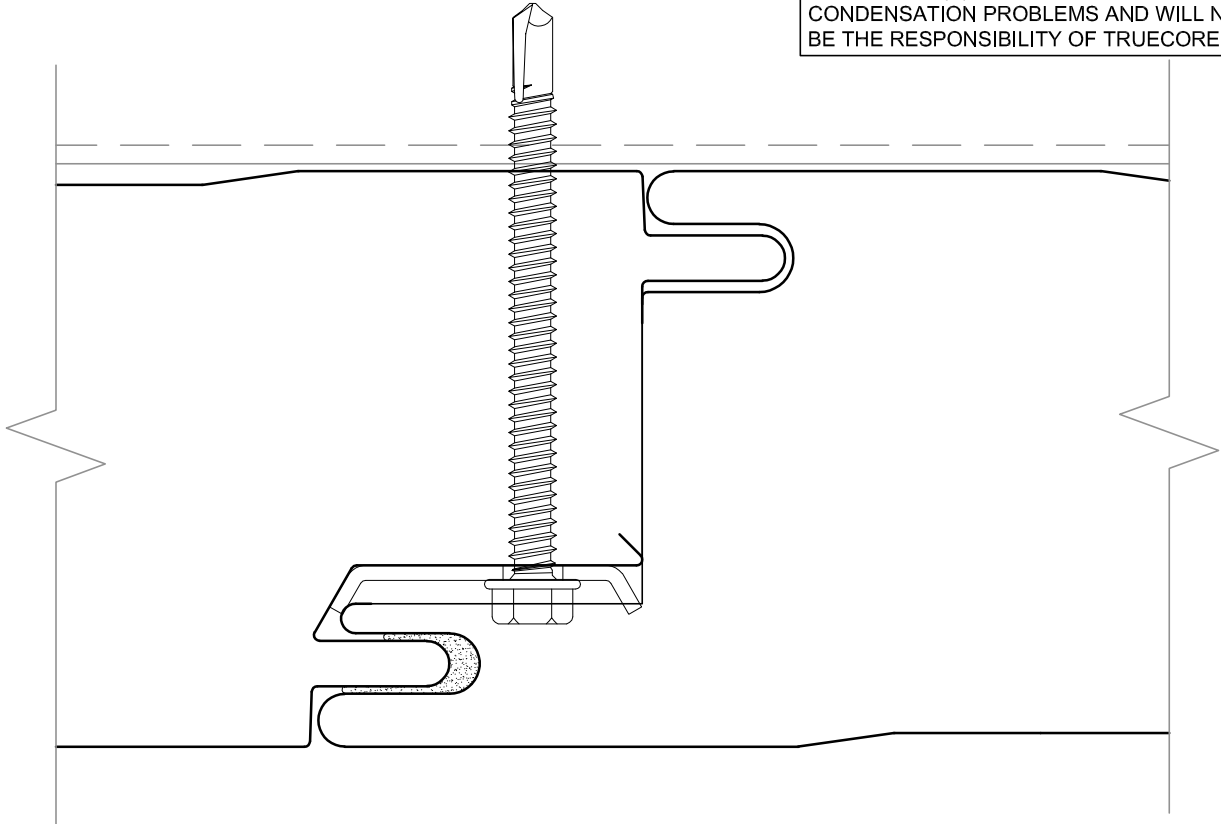
DATE:
9-23-2019

DRAWING NO.:

WR1



LOCATION OF THE SEALS (EXTERIOR AND / OR INTERIOR) MUST BE DETERMINED BY THE PROJECTS DESIGNER. FAILURE TO DETERMINE AND APPLY THE PROJECT'S VAPOR SEAL(S) MAY RESULT IN CONDENSATION PROBLEMS AND WILL NOT BE THE RESPONSIBILITY OF TRUECORE.

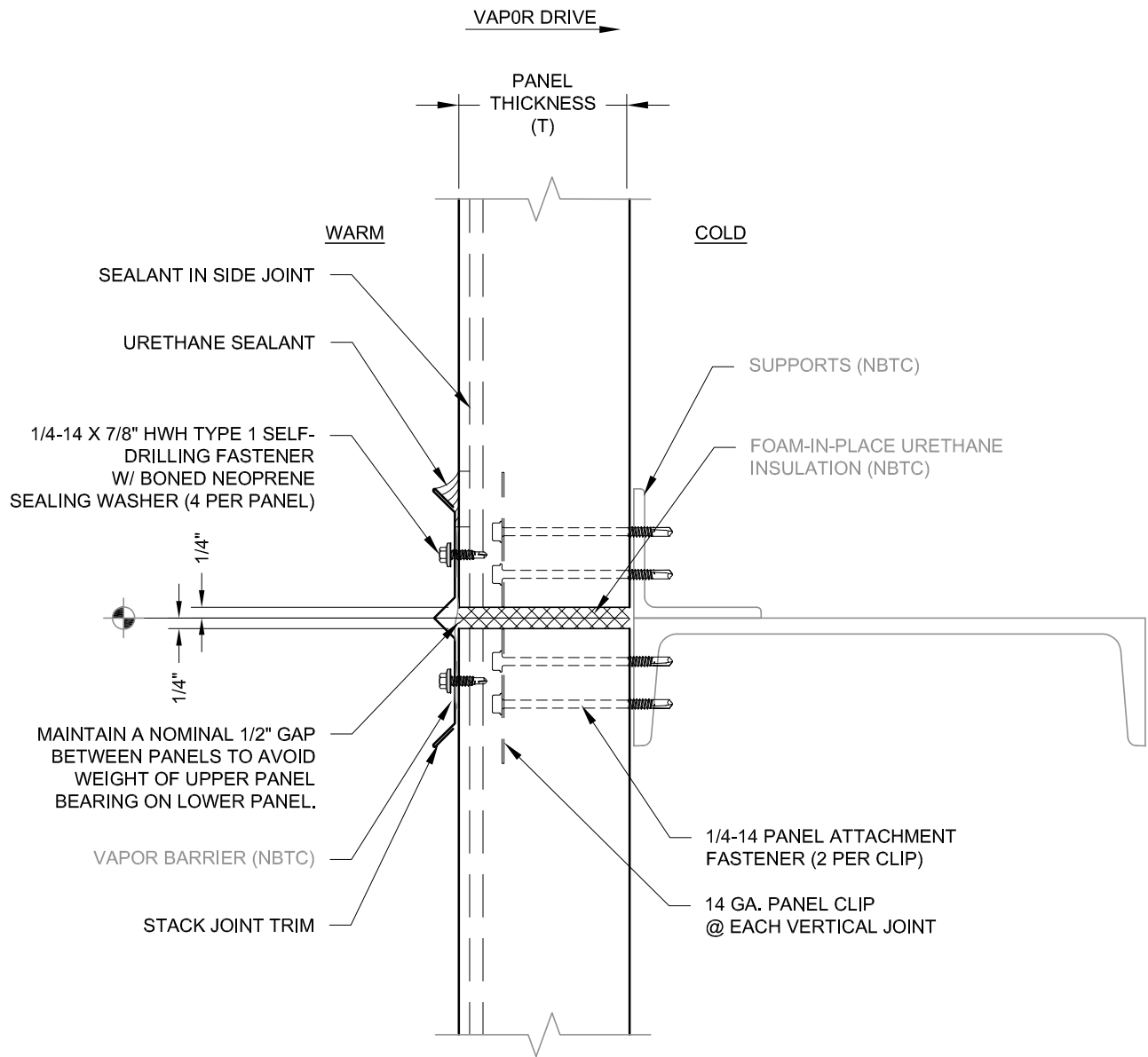


NBTC = NOT BY TRUECORE



PANEL SIDE JOINT

DRAWN BY: DBN	DATE: 9-23-2019	DRAWING NO.:
		JT1



NBTC = NOT BY TRUECORE



STACK JOINT

DRAWN BY:
DBN

DATE:
9-23-2019

DRAWING NO.:

JT2